

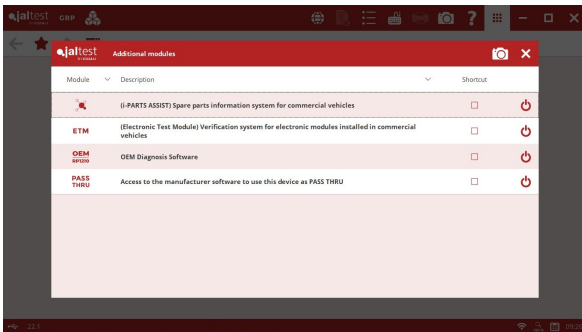


 **jaltest**
MHE
MATERIAL HANDLING

INNOVATIONS 22.1

SOFTWARE INNOVATIONS

The new software version Jaltest 22.1 once again offers more improvements and innovations that consolidate this tool as a benchmark in multibrand diagnostics for commercial and agricultural vehicles, OHW (Off-Highway) and MHE (Material Handling Equipment) applications, and vessels.

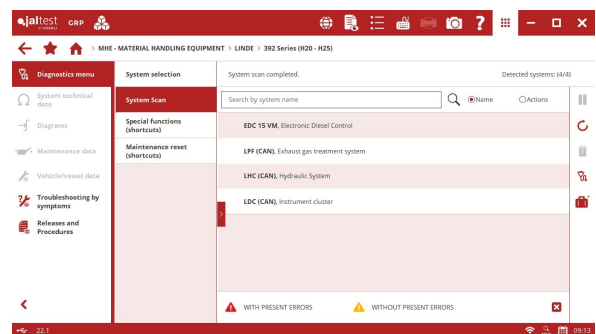
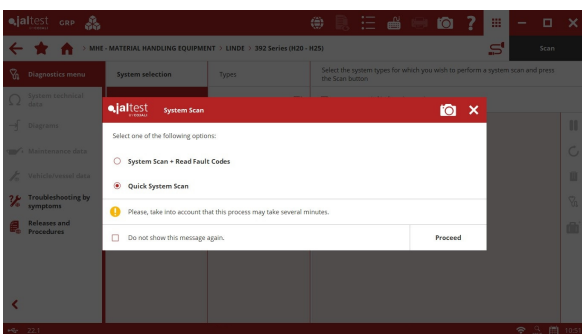


This version, the **additional modules** of Jaltest, except GRP, have been grouped in the upper navigation bar. However, it is possible to personalise it and create shortcuts.

In addition, the software usage times and the device registration process have been improved, the number of systems with variant control through web service has increased, etc.

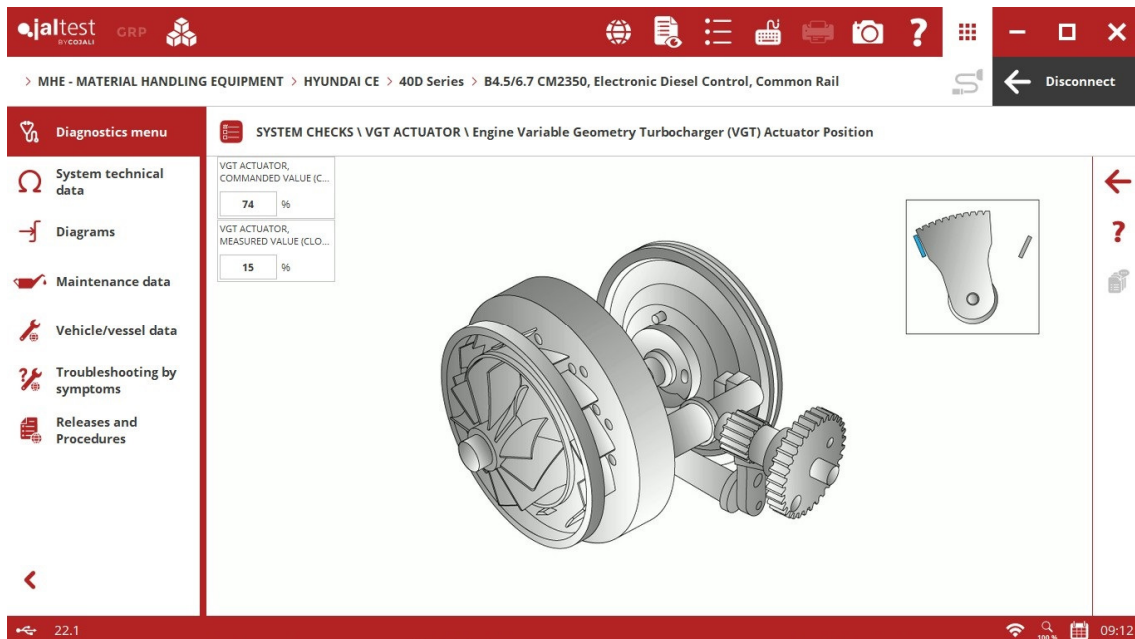
Quick system scan

Possibility of performing a quick system scan and knowing which systems are installed in the machine. In some models, special scan systems that allow the result achievement in just a few seconds are used.



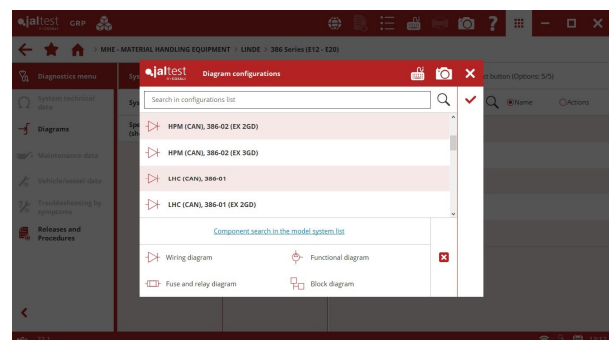
Dynamic display of System Display

GIF format in System Display that allows the variation of an image depending on the measurement value.



Display of all system diagrams of the model

With this version, the user can access all system diagrams of the model together with fuse and relay boxes, etc. by simply selecting the model.



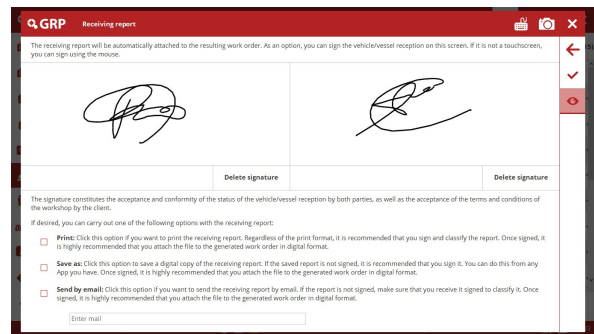
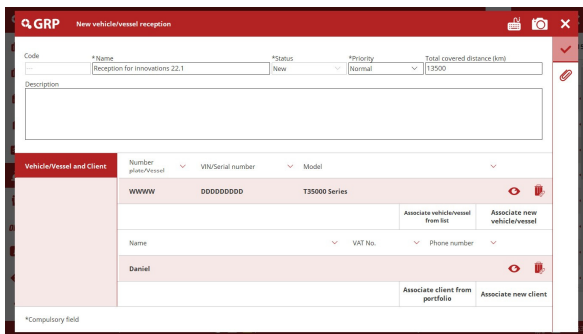
Other functionalities

- Maintenance and notification processing when installing and running the software in Windows 7.
- Classification of Jaltest videos by licence applications.
- Improvement when adding comments in diagrams by model and in fuse and relay boxes.
- Standardisation process developed of the display order regarding the types and intervals of maintenance services.
- Automatic display of system mileage and service hours in reports.

GRP

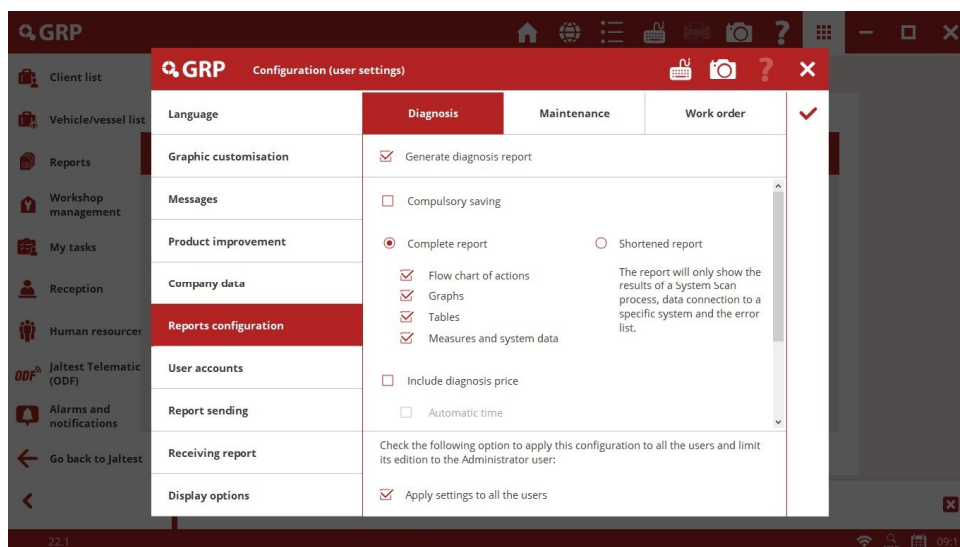
Generation and signature of reception reports in GRP

At the vehicle reception, a reception report is generated and it is automatically associated as document with the work order created. Furthermore, different methods for the signature of receptions have been added.



Report configuration

New options to compulsory save the report and possibility of locking the configuration by the Administrator.



Other functionalities

- Improvements in the data synchronisation.
- Possibility of assigning a diagnostics report of a model to a vehicle despite not matching. In this case, the client is informed, who now is able to associate reports even after selecting a wrong model or accessing through MANUFACTURERS.
- Access to the application through a GRP user. It is only necessary to fill in the data once and these will be filled in automatically in Jaltest Feedback.
- Modification of the GRP closure, new button "Go back to Jaltest".

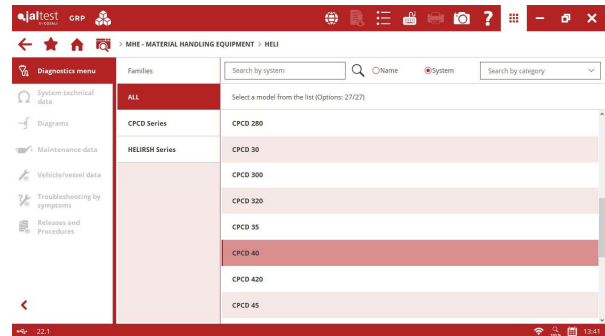
BRANDS AND MODELS

Take into account that this document is only a summary of the most relevant information of this new version. For further information, please visit Jaltest Report.

Some of the new models and brands in Jaltest are listed below.

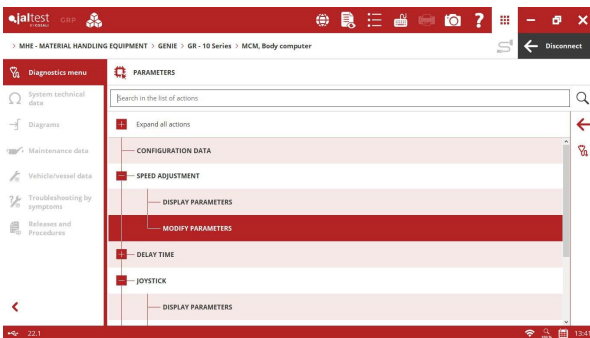
In this version, the **HELI** brand has been added with 2 families and a total of 27 models.

In addition, the number of models in the following brands has increased: **GENIE**, **HYSTER**, **JLG**, **MERLO** and **YALE**.



DIAGNOSTICS AND SYSTEMS

GENIE



⊕ New **JDC 558A** connector.

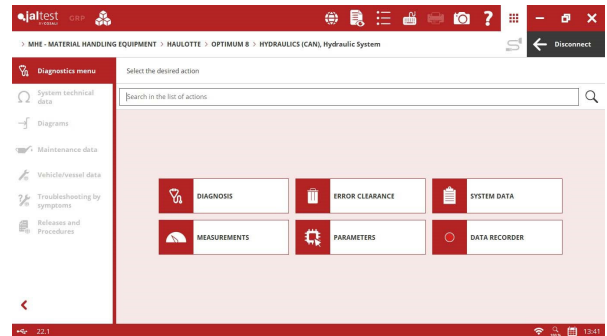
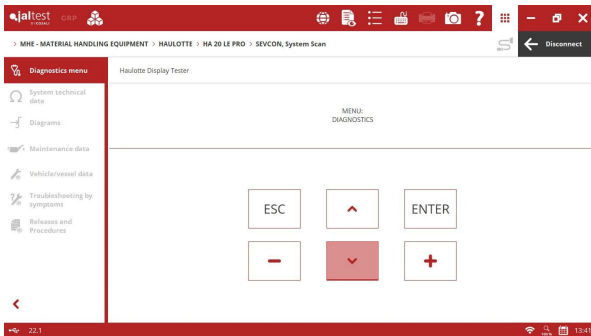
⊕ **MCM** central computer for lift platforms that includes advanced functions of parameter modification such as travel speed, screen configuration, etc.

HAULOTTE

⊕ New **JDC 559A** connector.

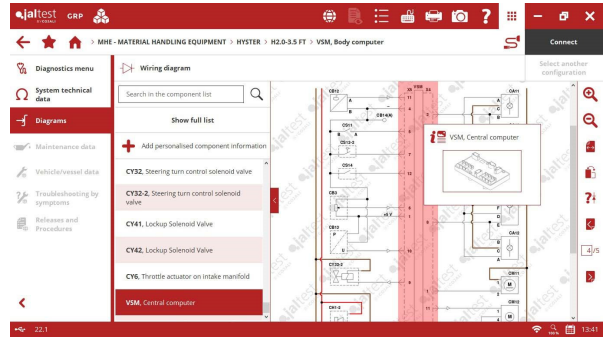
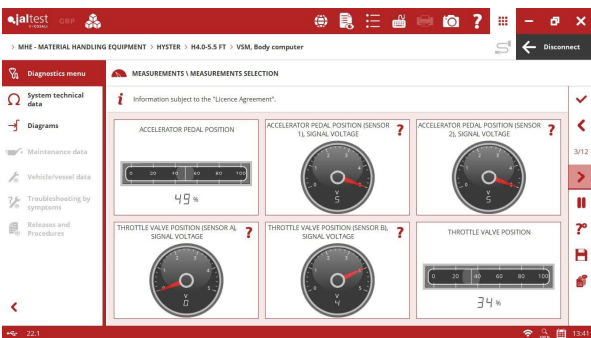
⊕ **SEVCON** management system of the power modules for electric machines that includes advanced functions of parameter modification and calibrations.

⊕ Control system of the hydraulic system for electric scissor lift platforms that includes advanced functions of parameter modification such as forward/backward speed of the machine, raising/lowering control of the platform, etc.



HYSTER

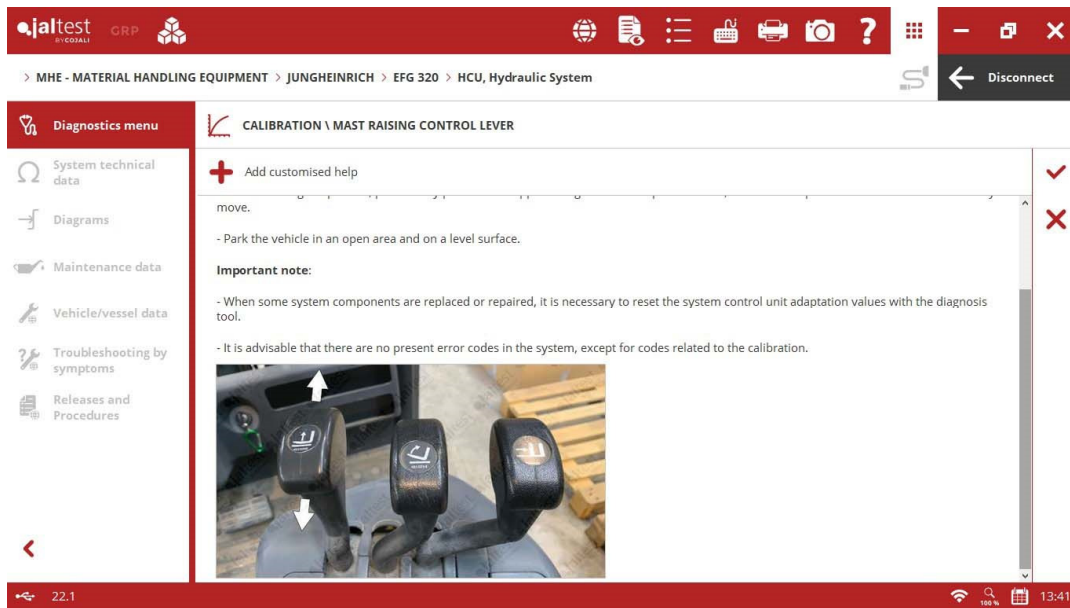
- ⊕ New **JDC 557A9** connector.
- ⊕ **MC** central computer for electric forklifts that includes advanced functions of parameter modification of the hydraulic and traction menu system.
- ⊕ **VSM** central computer for forklifts with internal combustion engines that includes wiring diagrams.



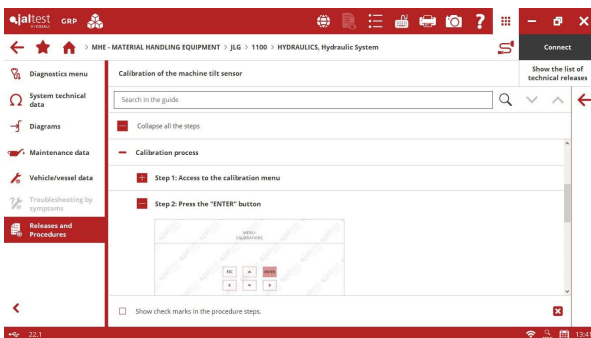
JUNGHEINRICH

- ⊕ **LMC** and **RMC** power management system for traction for **EFG 3xx** electric forklifts that includes calibrations such as steering angle sensor and accelerator pedal.
- ⊕ Control system of the hydraulic system for **EFG 3xx** electric forklifts.

In addition, new wiring diagram configurations available for **EFG 1xx** forklifts.



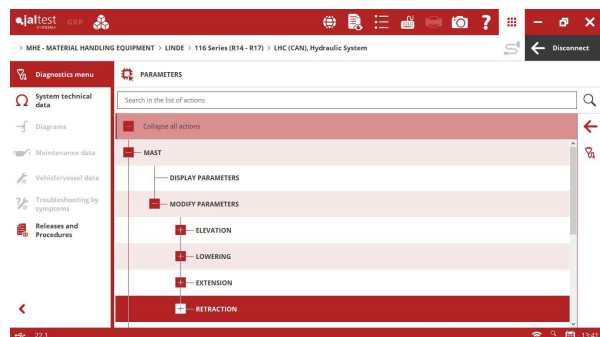
JLG



Control system of the hydraulic system, calibrations of the overload sensor, steering angle, boom control solenoid valves, pendular element, etc.

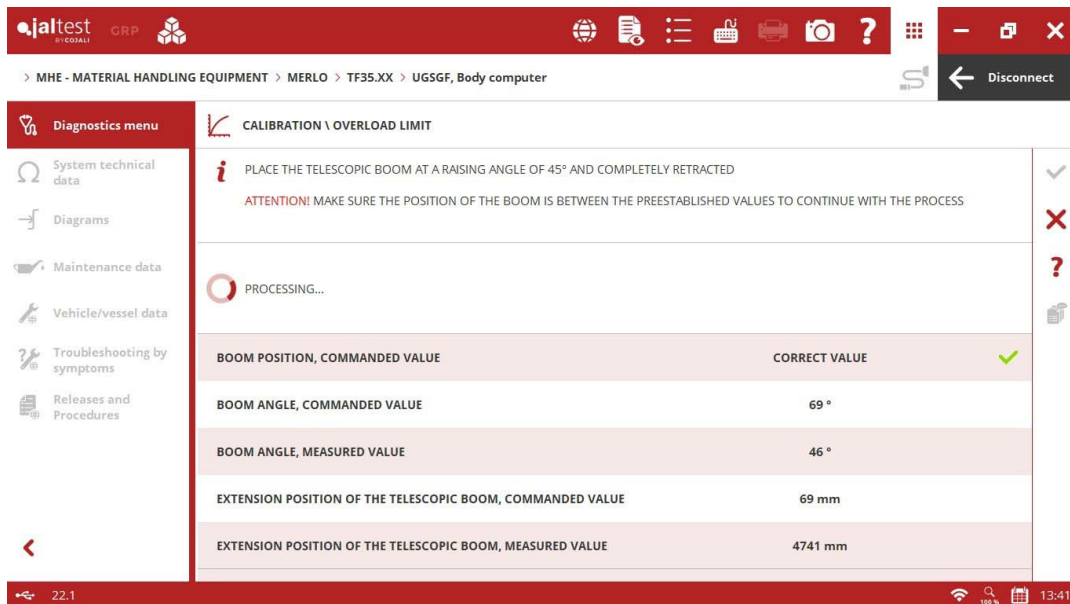
LINDE

LHC control system of the hydraulic system for retractable forklifts, parameter modification of mast control, fork holder control and spool valve control.



MERLO

UGSGF overload limit calibration in the load management system.



STILL

MCU central computer for electric forklifts, system checks and calibrations.

TOYOTA

BC central computer for electric forklifts, new system functionalities.

System activations:

- Mast raising solenoid valve
- Mast tilting solenoid valve
- Steering turn control solenoid valve
- Machine swing lock solenoid valve
- Pressure unloading solenoid valve of the hydraulic system
- Activation relay
- Anti roll over system lamp
- Acoustic buzzer

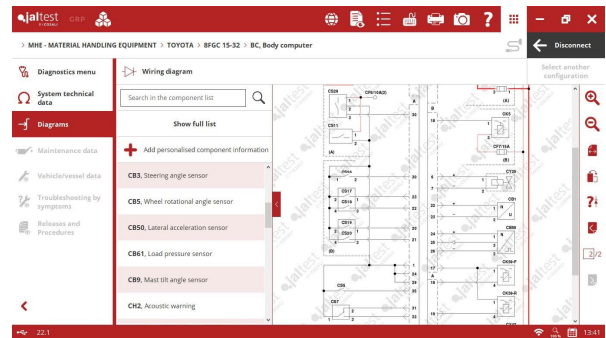
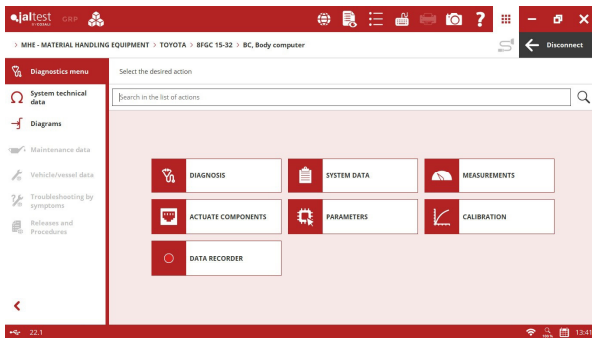
Parameter modifications:

- Mast raising
- Mast lowering
- Forward mast tilt
- Backward mast tilt
- Auxiliary spool valve 1
- Auxiliary spool valve 2
- Auxiliary spool valve 3
- Special equipment

Calibrations:

- Horizontal mast position
- Forward mast tilt
- Steering angle sensor calibration

In addition, new wiring diagram configurations available in **8FDU**, **8FGC** and **8FGU** models.



YALE

- ⊕ New **JDC 557A9** connector.
- ⊕ **MC** central computer for electric forklifts that includes advanced functions of parameter modification of the hydraulic and traction system.
- ⊕ **VSM** central computer for forklifts with internal combustion engines.