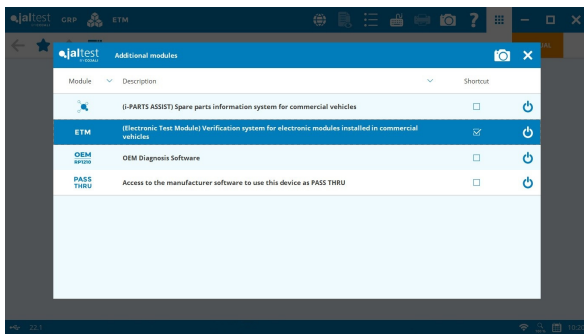




# INNOVATIONS 22.1

# SOFTWARE INNOVATIONS

The new software version Jaltest 22.1 once again offers more improvements and innovations that consolidate this tool as a benchmark in multi-brand diagnostics for commercial and agricultural vehicles, OHW (Off-Highway) and MHE (Material Handling Equipment) applications, and vessels.

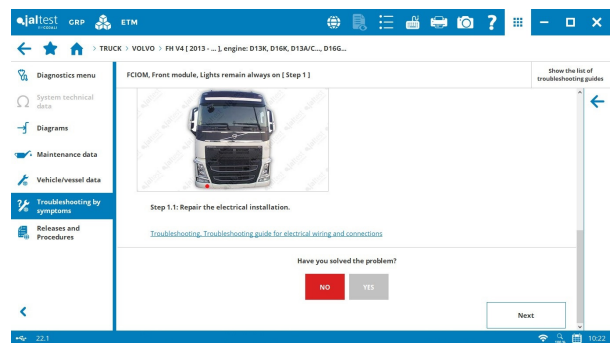


This version, the **additional modules** of Jaltest, except GRP, have been grouped in the upper navigation bar. However, it is possible to personalise it and create shortcuts.

Also, the software usage times and the registration process have been improved, the number of systems with variant control through web service has increased, etc.

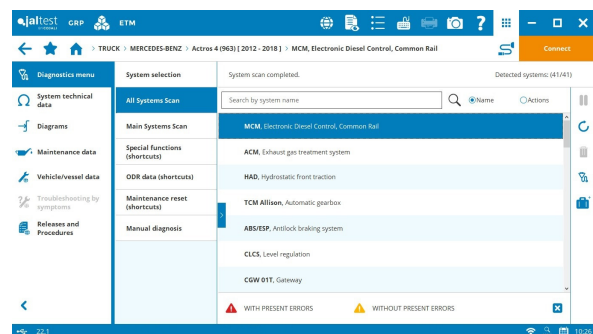
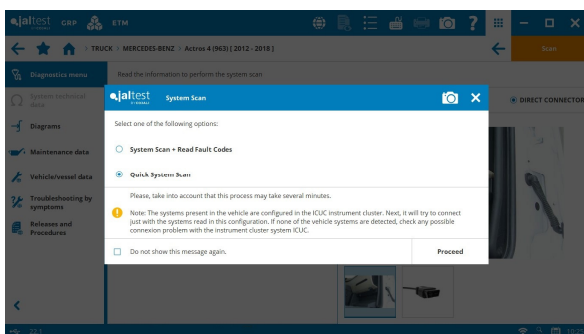
## SMART guides

Promotional SMART guides available in the module of troubleshooting guides by symptom and associated with diagnostics errors. The new SMART guides offer a totally guided and efficient repair, which optimises the workshop times.



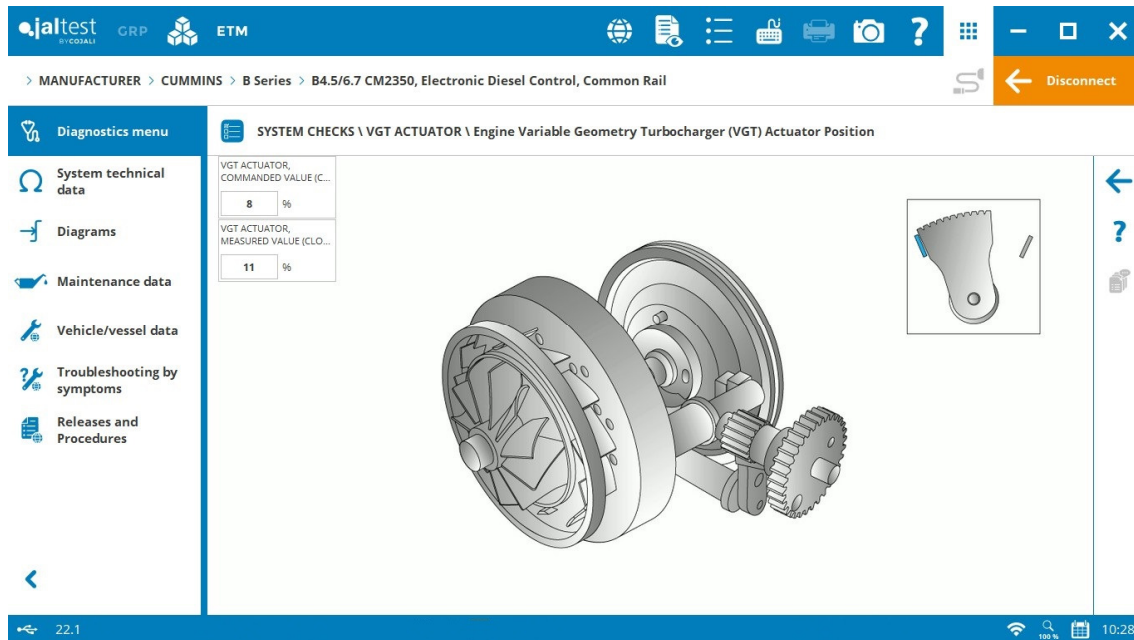
## Quick system scan

Possibility of performing a quick system scan and knowing which systems are installed in the vehicle. In some models, special scan systems that allow the result achievement in just a few seconds are used.



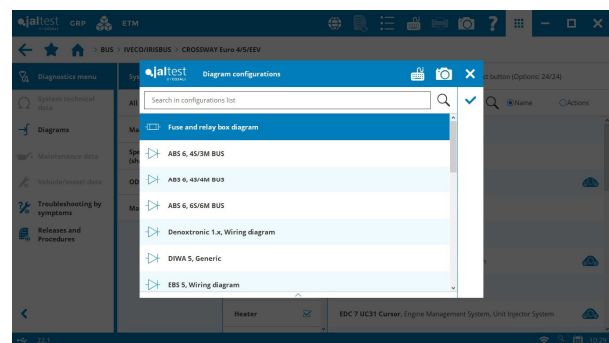
## Dynamic display of System Display

GIF format in System Display that allows the variation of an image depending on the measurement value.



## Display of all system diagrams of the model

With this version, the user can access all system diagrams of the model together with fuse and relay boxes, etc. by simply selecting the model.



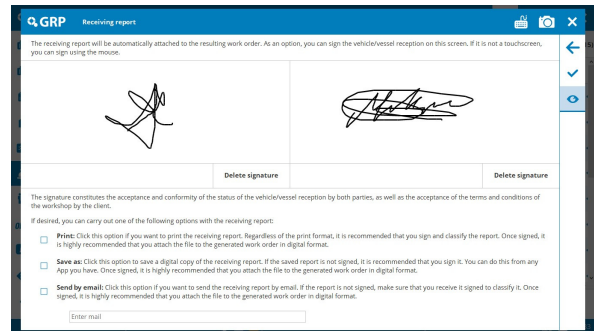
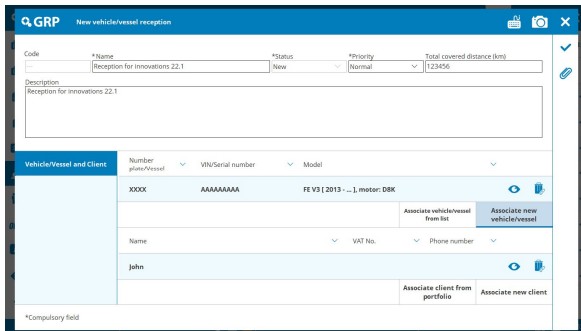
## Other functionalities

- Maintenance and notification processing when installing and running the software in Windows 7.
- Classification of Jaltest videos by licence applications.
- Improvement when adding comments in diagrams by model and in fuse and relay boxes.
- Standardisation process developed of the display order regarding the types and intervals of maintenance services.
- Automatic display of system mileage and service hours in reports.

# GRP

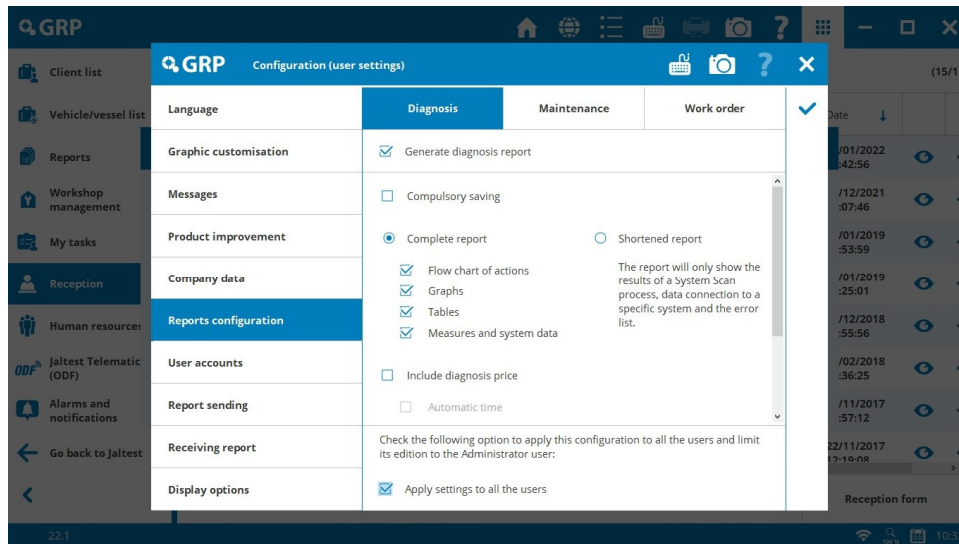
## Generation and signature of reception reports in GRP

At the vehicle reception, a reception report is generated and it is automatically associated as document with the work order created. Furthermore, different methods for the signature of receptions have been added.



## Report configuration

New options to compulsory save the report and possibility of locking the configuration by the Administrator.



## Other functionalities

- Improvements in the data synchronisation.
- Possibility of assigning a diagnostics report of a model to a vehicle despite not matching. In this case, the client is informed, who now is able to associate reports even after selecting a wrong model or accessing through MANUFACTURERS.
- Access to the application through a GRP user. It is only necessary to fill in the data once and these will be filled in automatically in Jaltest Feedback.
- Modification of the GRP closure, new button "Go back to Jaltest".

## ETM

### Coverage extension:

Wabco 4th generation modules

Single modules:

480 106 512 0

480 106 605 0

480 106 607 0

Double modules:

480 106 005 0

480 106 106 0

Knorr-Bremse 4th generation modules

K050209

K093191



## BRANDS AND MODELS

---

Take into account that this document is only a summary of the most relevant information of this new version. For further information, please visit Jaltest Report.

Some of the new models of this version are listed below.

### HINO

DUTRO – 300 Series Hybrid

### ISUZU

D-MAX 3.0 Diesel Turbo, engine 4JJ3-TC

### IVECO

T-Way, engine: Euro 6d

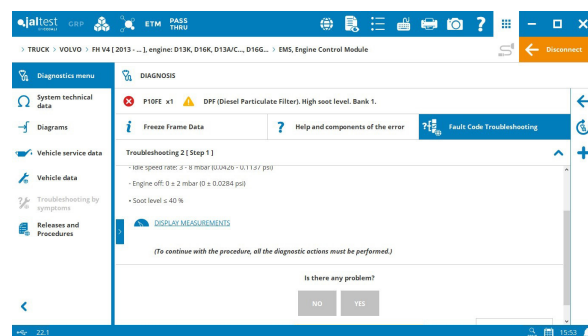
### TATA

CityRide BS-VI

# DIAGNOSTICS AND SYSTEMS

Take into account that this document is only a summary of the most relevant information of this new version. For further information, please visit Jaltest Report.

Overall, new technical information and troubleshooting guides (now **SMART guides**) of the most common error codes in the workshop thanks to the communication channels with clients such as the technical support offered by the project, training, Jaltest Feedback and “Product improvement” option.



Likewise, new images of component, technical data and location have been added. For example, new images of component location available in **MWM Euro 5** engines.

We work each update to increase the references and variants of all systems, extending coverage and ensuring the reliability of the interactions with the vehicle systems. New references of supported control units available for brands such as **DAF, RENAULT, SCANIA, VOLVO**, etc.

## TRUCK

### DAF

Reduction of the time spent performing the system scan in **CF E6 New** and **XF E6 New** models.

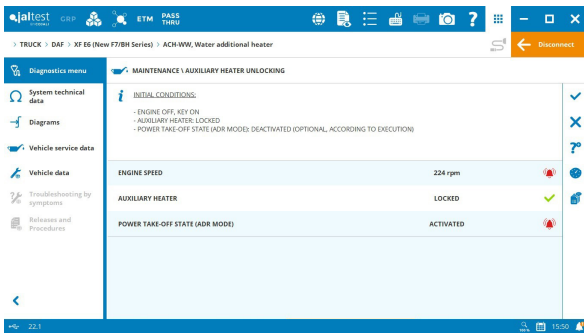
**VIC-3** vehicle control system, parameters of driver performance, ECO mode, etc.

**EAS 4** exhaust gas aftertreatment system, PM particulate sensor checking.

**ECAS 5** suspension control system, calibration for vehicles with two height sensors in the rear axle.

**ACH-WW Webasto Thermo Top Pro** auxiliary heater unlocking.

New vehicle technical information available in models with **MX11** and **MX13 [2017 - ...]** engine types, as well as in **Euro 6** models of **LF, CF** and **XF** families.



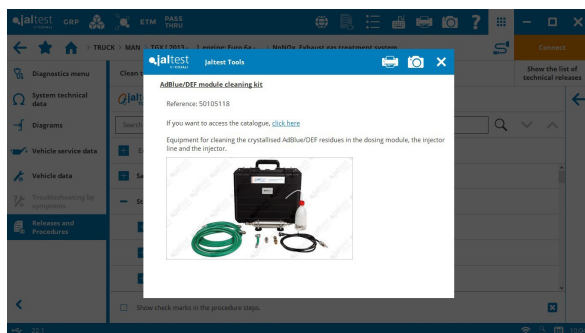
## IVECO

**TPMS** tyre pressure monitoring system, sensor synchronisation and nominal pressure adjustment.

New vehicle technical information available in models with **Euro4/5/EEV** engine types of **Stralis, Trakker** and **Eurocargo**, families.

## MAN

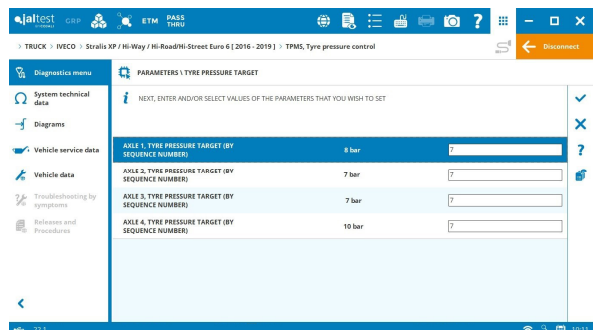
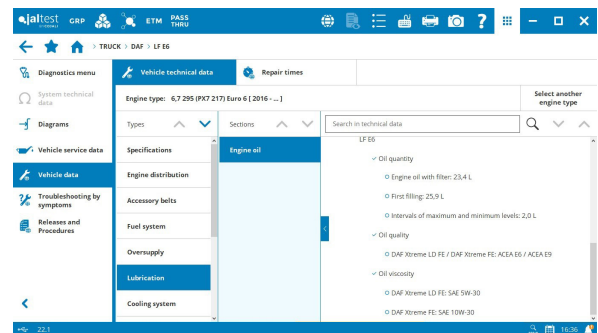
In vehicles with **TG2 technology**:



In vehicles with **TG3 technology**:

- ⊕ **HVAC** climate control.
- ⊕ **AHW** auxiliary heater and...
- ⊕ ...other auxiliary systems such as the **PTY** additional management computer, the **EOIKSM** bodywork module or the **EOI3HS** servo-assisted manual transmission.

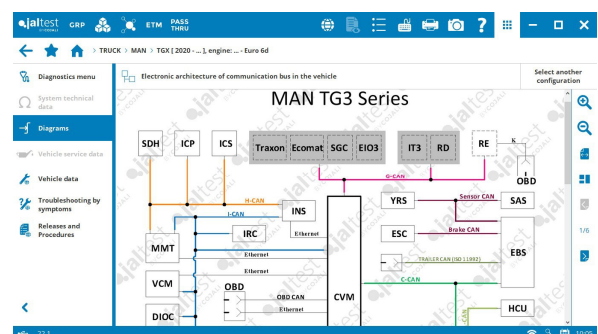
**EDC ASM2020** engine control system, system counter reset, system reset after replacing the catalytic converter or Diesel Particulate Filter, etc.



**PTM** common powertrain controller, maintenance configuration.

**EBS 5** brake system, configuration of the braking predominance pressure.

**NoNOx** exhaust gas aftertreatment system, cleaning procedure of the AdBlue circuits.



**CVM2** maintenance system, control and reset of services.

**NoNOx** exhaust gas aftertreatment system, cleaning procedure of the AdBlue circuits.

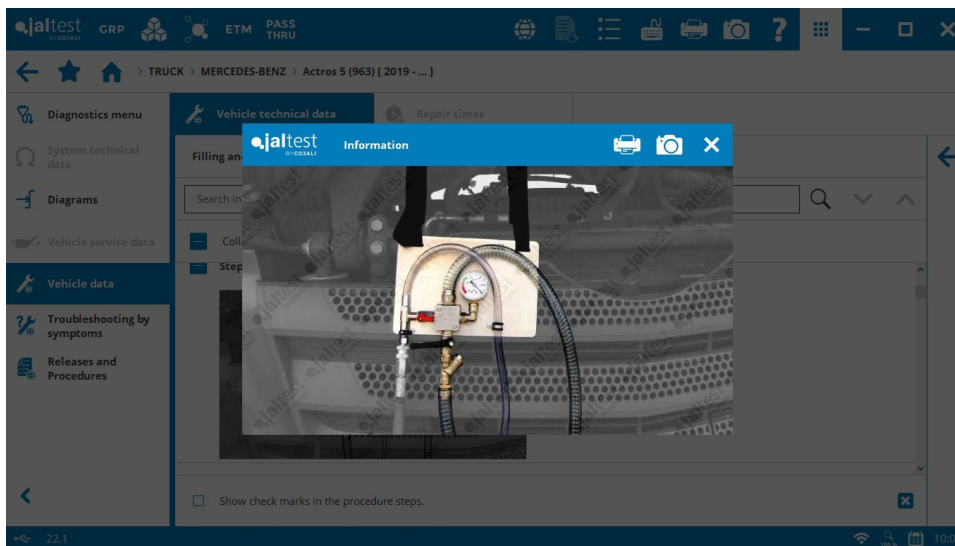
## MERCEDES-BENZ

In vehicles with **MB5 technology**:

⊕ **AALC** automatic control system of the lift axle.

**ACM3** exhaust gas aftertreatment system, fuel dosing system check, DOC catalytic converter regeneration, AdBlue/DEF consumption reset, etc.

*“Filling and purge of the coolant liquid circuit”* procedure in engines of **Actros 5 (963)** and **Arocs 5 (964)** models.



In vehicles with **MB4 technology**:

**ABS 01T** brake system, ESP stability control system calibration.

**SCA** cab module, parameter modification.

In **Unimog** vehicles:

⊕ **ACM3** exhaust gas aftertreatment system.

**TCM 01ST** transmission, calibrations of the transmission and clutch.



## RENAULT

**EMS** engine control system in vehicles with **V3 and V4 technology**, new operation data based on the vehicle speed and engine oil pressure, and coolant pump reset, among others.

In vehicles with **V4 technology**:

**APM**, compressed air production management, control unit replacement.

In vehicles with **DXi technology**:

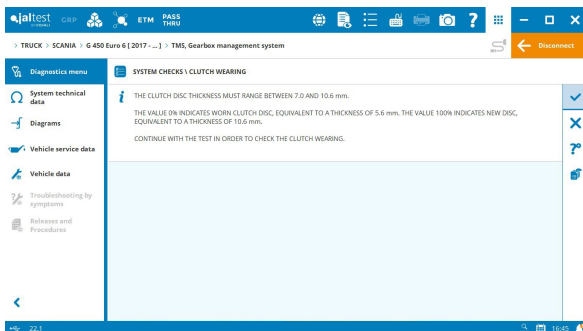
**VECU** vehicle control unit, parameter setting of power take-off activation.

Use of **50105089 - TOOL TO FIX THE ROCKER ARM SHAFT** Jaltest Tools reference in the “Checking procedure of the cam position” and “Assembly and disassembly procedures of the rocker arm shaft”.

## SCANIA

Manual diagnostics for the new **New Series** models.

**EMS MD1** engine control system, soot level measurement.



**TMS2** transmission, parameter setting and check of the clutch wearing.

**COO8** coordinator, shutdown of the engine at idle check.

**CCS3** climate control, activations and system checks.

Use of **50007006 - CHECKING KIT OF COOLANT CIRCUIT LEAKS** Jaltest Tools reference in the “Check that there are not coolant leaks” maintenance services in the **New Series** models.

## VOLVO

**EMS** engine control system in vehicles with **V3 and V4 technology**, engine brake check with the vehicle parked and reset of the DPF differential pressure sensor, among others.

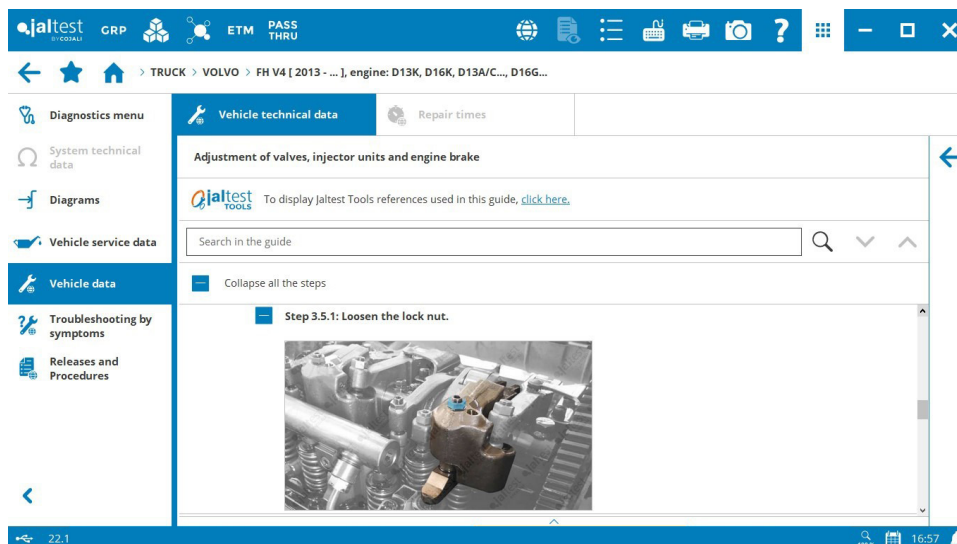
In vehicles with **V4 technology**:

**RCIOM** rear module, rear light configuration.

Alarm system, motion sensor calibration.

**FAS** electro-hydraulic steering system, active steering calibration.

In addition, new engine types with technical data such as **540 (D13K5) [2019 - ...] Euro 6** or **460 (G13C) LNG [2019 - ...] Euro** available and new “Valve adjustment” procedures available in different brand engines.



## BUS

New functionalities in control systems of **CUMMINS** engine that apply to different brands. For example, the maintenance reset of the DPF and DOC filters as well as several parameter settings have been developed in the **B6.7 CM2670** system. In addition, the setting parameters of the adaptive cruise control have been developed in the **ISB 4.5/6.7 CM2350** system and the AdBlue/DEF pump check has been developed in the **ISZ CM2150** system.

**Wabco IVTM** tyre pressure control system, setting parameters of the sensors for the front and rear module.

⊕ **EDC 17 CV41 FPT** engine control system in brand models such as **GOLDEN DRAGON, ISUZU, MENARINIBUS, SOR, TEMSA**, etc.

⊕ **ETS VSE** steering control system in brand models such as **DENNIS EAGLE** or **IRIZAR**.

## MAN

⊕ **ZF Ecolife 4** transmission in **18C/19C Lion's 4 City (18 - 19 m)** and **12C Lion's 4 City (12 m)** models.

In addition, new engine types with technical data available, for example **6,9 250 (D0836 LOH82) Euro 6** or **12,4 480 (D2676 LOH31) Euro 6**.

## MERCEDES-BENZ

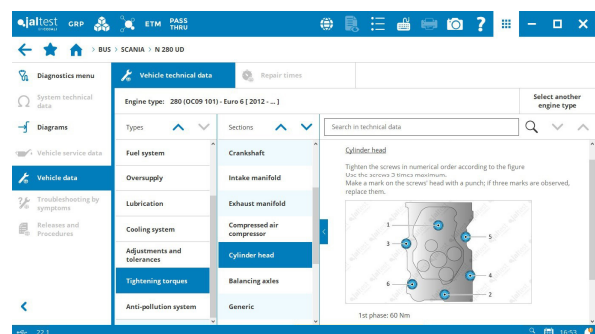
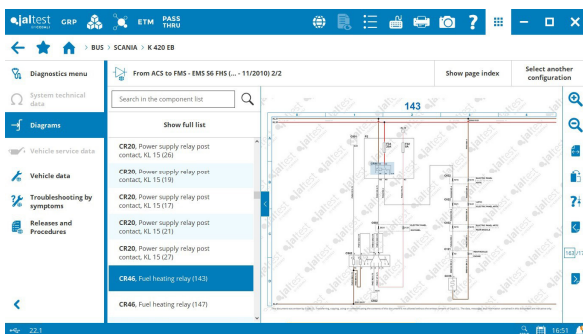
**CPC** common powertrain controller in vehicles with **MB5 technology**, modification of the maximum engine speed rate.

## SCANIA

Diagrams by model in buses, as shown below for **K 420 EB** model.

**ELC3** suspension control system, sidewalk detector sensor parameter.

In addition, new **250 (DC09 11) XPI – Euro 6** and **280 (OC09 101) – Euro 6** engine types available in new models with technical data.



## TRAILER

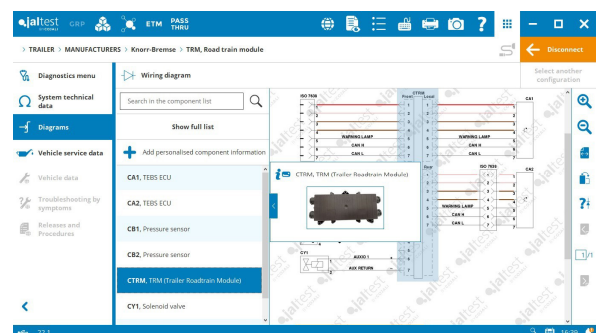
New classification of the manufacturer systems.

## KNORR-BREMSE

⊕ **TRM** Roadtrain module.

**TEBS Gen 2** brake system, configuration of LAC1 and LAC2 lift axles.

## WABCO



Basic development of the new **E6 generation** of the **Trailer EBS E** brake system and configuration of the auxiliary OptiLink function in GIO5.

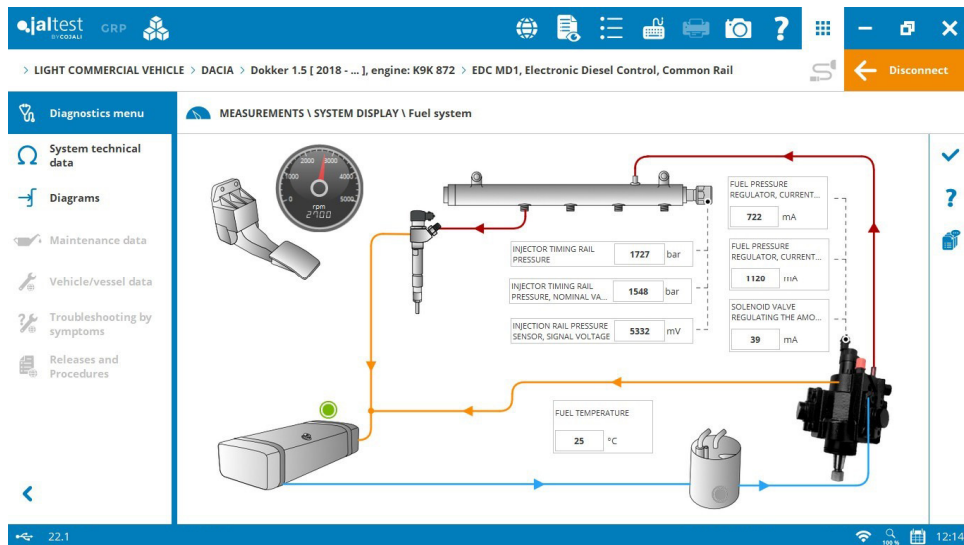
# LIGHT COMMERCIAL VEHICLE

## CITRÖEN

⊕ **EDC MD1** engine control system for **DW5 1.5** engines.

## DACIA

System Display in the **EDC MD1** engine control system of **Dokker 1.5 [2018 - ...] engine K9K 872** model.



## DFSK

⊕ **EPS** steering control system in **C32** models.

## FIAT

⊕ **CFC448** automatic transmission in **Ducato** models.

## IVECO

⊕ **ECM 5SF** engine control system in **Daily CNG (2019 - ...)** models.

## MAN

⊕ **Climatic 4.1** climate control in **TGE** models.

## MERCEDES-BENZ

In **Sprinter 907/910** models:

⊕ **RFK** rear camera.

⊕ **ZAN** multifunction display.

In **Vito [447]** models:

- ⊕ **MRD1** engine control system.

## OPEL

In **Movano** models:

- ⊕ **BAC013** bodywork module.

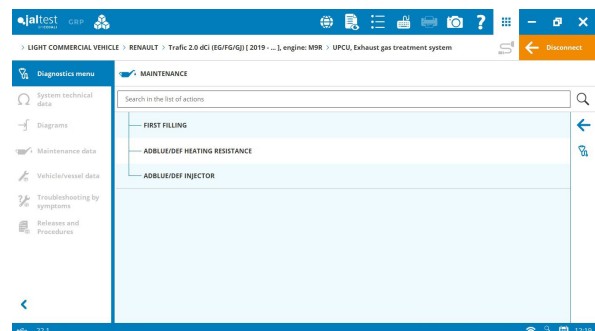
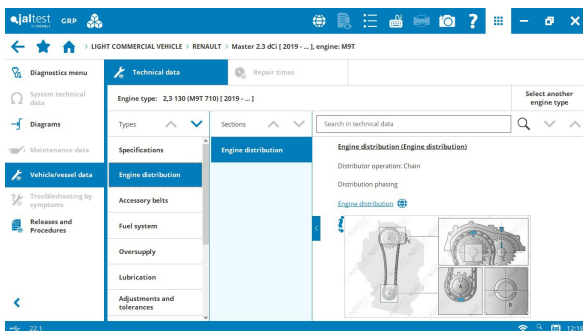
## PEUGEOT

- ⊕ **BSM** central computer in **Expert (K0)** models.

## RENAULT

Vehicle technical data in **Master III Fase II** models.

UPCU exhaust gas aftertreatment system in Traffic Euro 6 models with M9R engine, AdBlue/DEF filling, AdBlue/DEF heating resistance activation, etc.



## VOLKSWAGEN

- ⊕ **EDC MDI** engine control system list for **DMZ/DNA MY2021** engines.

Wiring diagrams of the model in **Crafter [2E, 2F]** family.

