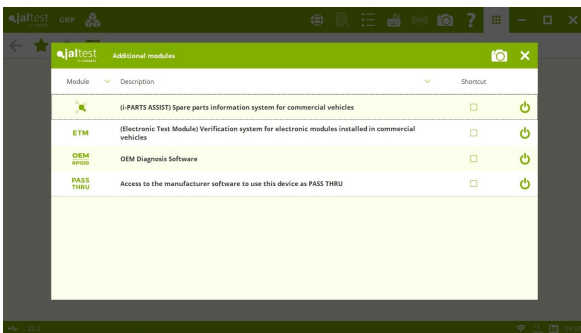




INNOVATIONS 22.1

SOFTWARE INNOVATIONS

The new software version Jaltest 22.1 once again offers more improvements and innovations that consolidate this tool as a benchmark in multibrand diagnostics for commercial and agricultural vehicles, OHW (Off-Highway) and MHE (Material Handling Equipment) applications, and vessels.

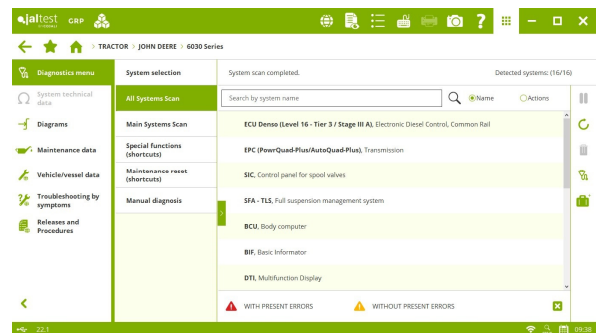
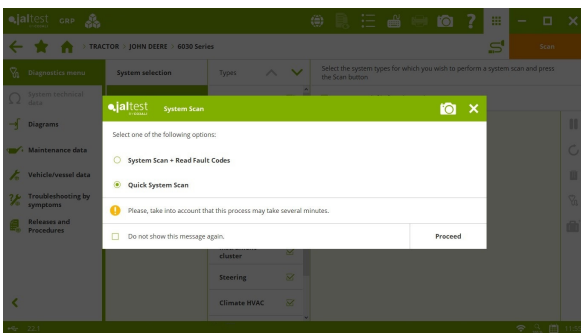


This version, the **additional modules** of Jaltest, except GRP, have been grouped in the upper navigation bar. However, it is possible to personalise it and create shortcuts.

In addition, the software usage times and the device registration process have been improved, the number of systems with variant control through web service has increased, etc.

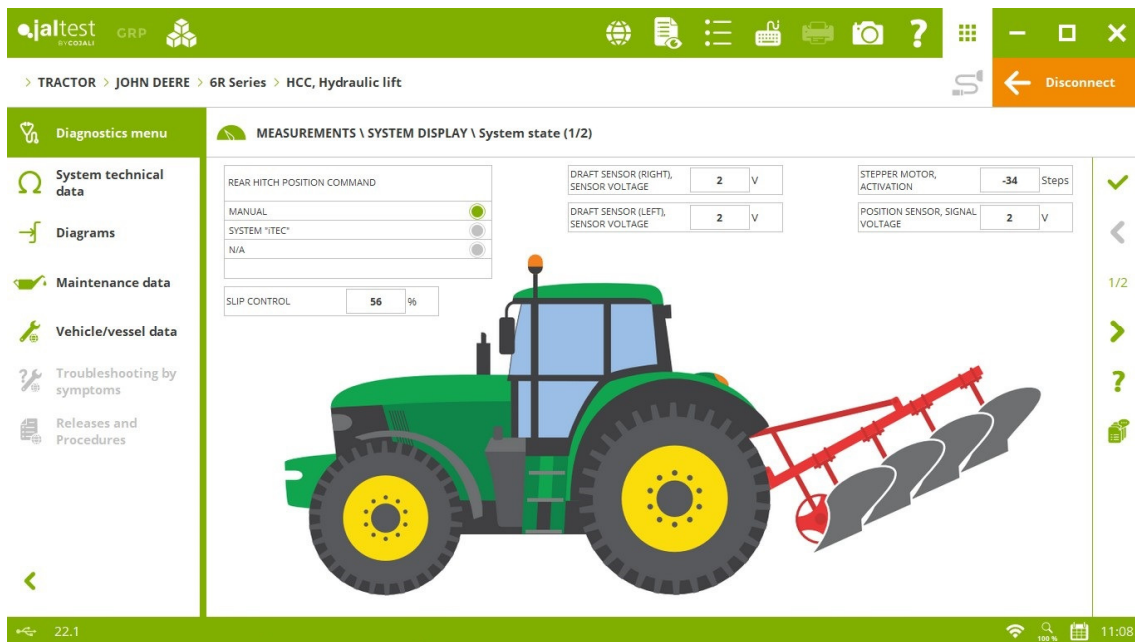
Quick system scan

Possibility of performing a quick system scan and knowing which systems are installed in the machine. In some models, special scan systems that allow the result achievement in just a few seconds are used.



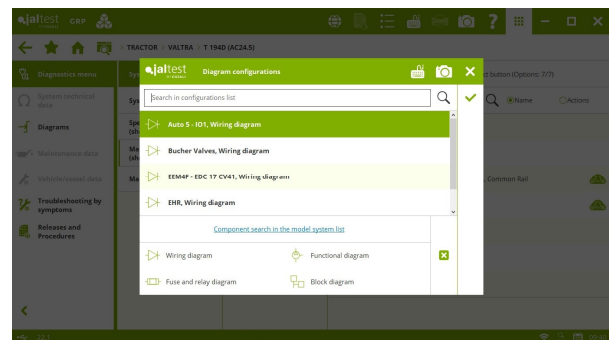
Dynamic display of System Display

GIF format in System Display that allows the variation of an image depending on the measurement value.



Display of all system diagrams of the model

With this version, the user can access all system diagrams of the model together with fuse and relay boxes, etc. by simply selecting the model.



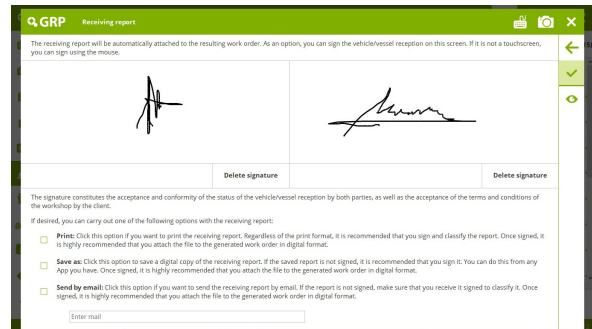
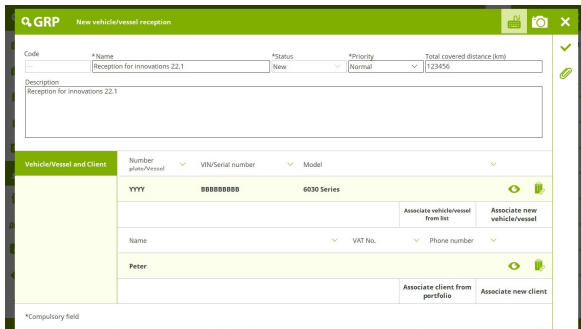
Other functionalities

- Maintenance and notification processing when installing and running the software in Windows 7.
- Classification of Jaltest videos by licence applications.
- Improvement when adding comments in diagrams by model and in fuse and relay boxes.
- Standardisation process developed of the display order regarding the types and intervals of maintenance services.
- Automatic display of system mileage and service hours in reports.

GRP

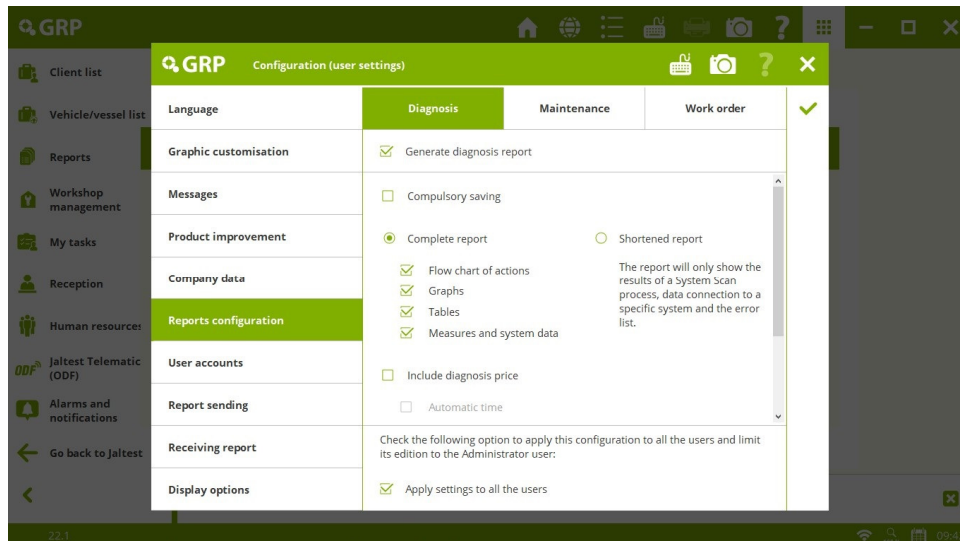
Generation and signature of reception reports in GRP

At the vehicle reception, a reception report is generated and it is automatically associated as document with the work order created. Furthermore, different methods for the signature of receptions have been added.



Report configuration

New options to compulsory save the report and possibility of locking the configuration by the Administrator.



Other functionalities

- Improvements in the data synchronisation.
- Possibility of assigning a diagnostics report of a model to a vehicle despite not matching. In this case, the client is informed, who now is able to associate reports even after selecting a wrong model or accessing through MANUFACTURERS.
- Access to the application through a GRP user. It is only necessary to fill in the data once and these will be filled in automatically in Jaltest Feedback.
- Modification of the GRP closure, new button "Go back to Jaltest".

BRANDS AND MODELS

Take into account that this document is only a summary of the most relevant information of this new version. For further information, please visit Jaltest Report.

Some of the new models and brands in Jaltest are listed below.

TRACTOR

In this version, the **CABELA'S** brand has been added.

ARBOS

5100, engine: Tier 5/Stage V

5130, engine: Tier 5/Stage V

BCS

Valiant 60 Series

Volcan 85 Series

DEUTZ-FAHR

3 Series, engine: Perkins 403J/404J

BCS

Raptor 35 Series

Vega 85 Series

LANDINI

Mistral Series, engine: Tier 5/Stage V

Rex 3 Series (F, GE), engine: Tier 5/Stage V

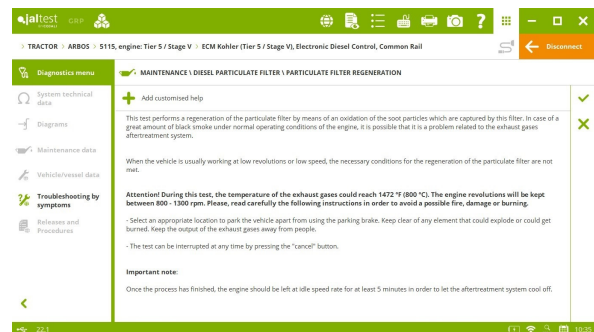
MASSEY FERGUSON

1700 E Series, engine: Shibaura

McCORMICK

X2 Series (55/60), engine: Tier5/Stage V

X4 Series (60/70/80), engine: Tier 5/Stage V



PASCUALI

Era 35 Series
Mars 85 Series

SAME

Delfino Series, engine: Perkins 403J/404J

HARVEST EQUIPMENT

In this version the following brands have been added: **AGRIFAC, DEWUKF, HOLMER, P.BARIGELLI & C, PLOEGER** and **VERVAET**.

FRANZ KLEINE

Beet harvesters:
- SF 20 Series
- Beetliner Compact

JOHN DEERE

X9 Series combine harvester

SELF-PROPELLED AND TRAILING IMPLEMENT

In this version the following brands have been added: **AGRIFAC, HOLMER, PLOEGER** and **VERVAET**.

CASE IH

WD Series, engine: Final Tier 4/Stage IV

ENERGREEN

ILF Series (Alpha, Aspen, Athena, etc.)
RoboEVO
RoboMAX

NEW HOLLAND

SR Series, engine: Tier 3/Stage III
SR Series, engine: Final Tier 4/Stage IV

DIAGNOSTICS AND SYSTEMS

Take into account that this document is only a summary of the most relevant information of this new version. For further information, please visit Jaltest Report.

TRACTOR

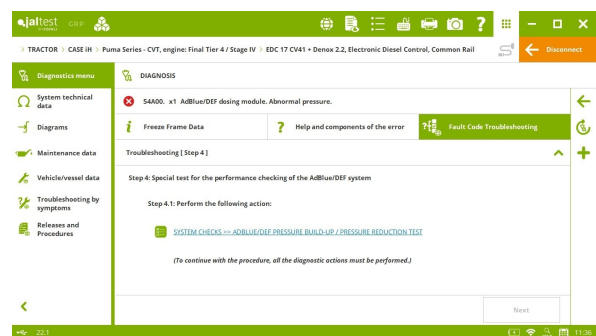
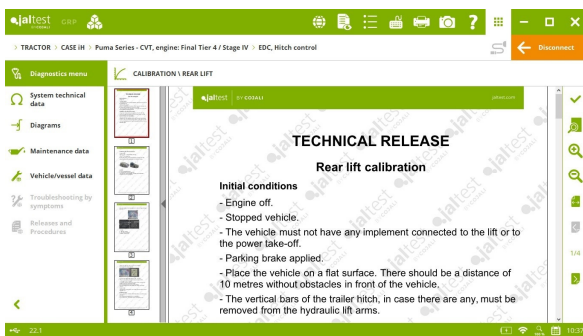
CASE IH

⊕ **ASC** advanced steering system.

Calibration procedures of the **TCM** and **DEC** transmissions, **RPTO** rear power take-off, and **EDC** and **HCU** lifts.

Magnum MX Series model diagrams.

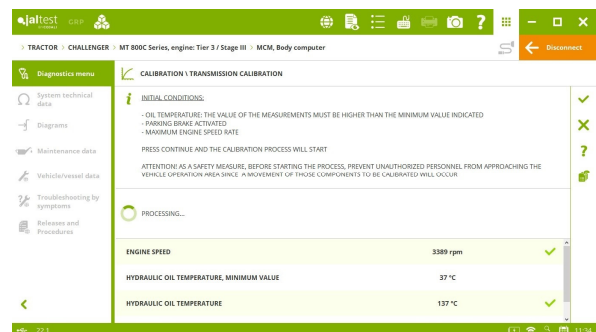
In addition, new wiring diagram configurations and troubleshooting guides in error codes available in the **EDC 17 CV41** and **EDC 17 C49** engine control systems.



CHALLENGER

EDC 17 CV42 engine control system in **1000 Series** models, EGR valve activation and SCR pressure sensor check.

MCM central computer, transmission calibration in different models such as **MT 700B Series**, **MT 800B Series**, etc.



CLAAS

⊕ **HLHP** central computer in **Atos (A78/A79/A98/A99)** model.

Dynamic System Display in **ECU EDC Level 23/33/34** engine control systems in numerous brand models.

KUBOTA

New technical data, wiring diagram configurations and images available in the **E-CDIS** engine control system in **L2 Series** models.

LAMBORGHINI

Maintenance resets of the transmission oil change, the transmission oil filter, and the spool valve oil change in the **SECU** system.

LANDINI

Spool valve configuration in **7 Series** models.

In addition, new wiring diagram configurations available in the **EDC 7 UC31** and **EDC 17 CV41** engine control systems in **FPT** engines. Also, new troubleshooting guides in error codes available in this latter system.

MASSEY FERGUSON

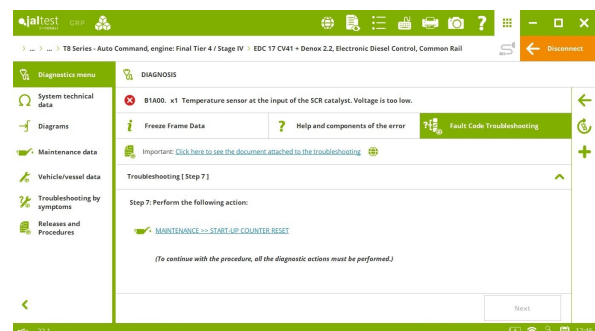
New technical data and wiring diagram configurations available in the **EDC 7 UC31** engine control system in **8600 Series** models and in the **AUTOTRONIC 3 – PowerControl** system in **6400 Series** models.

NEW HOLLAND

⊕ **ASC** advanced steering system.

Calibration procedures of the **TCM** and **DEC** transmissions, **RPTO** rear power take-off, and **EDC** and **HCU** lifts.

In addition, new wiring diagram configurations and troubleshooting guides in error codes available in the **EDC 17 CV41** and **EDC 17 C49** engine control systems.



PASQUALI

⊕ **Kohler Tier 5/Stage V** engine control system in **Eos 60 Series** models.

SAME

⊕ **HLHP** central computer in **Explorer 80/90/100** model.

Images of component location in **Fortis 100 Series**, **Fortis 100.4 Series** and **Fortis Infinity Line 100 Series** models.

VALTRA

DCC3 cabin control system, front suspension calibration in **S3** models.

Dynamic System Display in the **EHR** hydraulic system in numerous models.

HARVEST EQUIPMENT

CASE IH

New wiring diagram configurations, technical data and troubleshooting guides in error codes available in the **EDC 17 CV41** engine control system in several models.

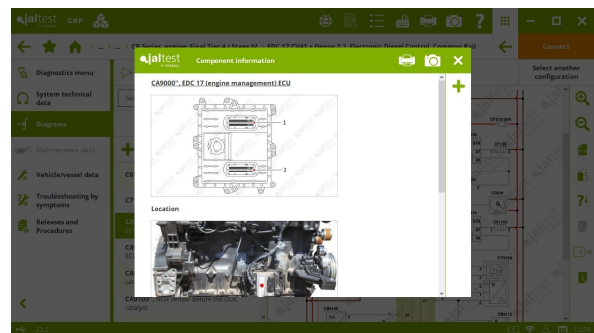
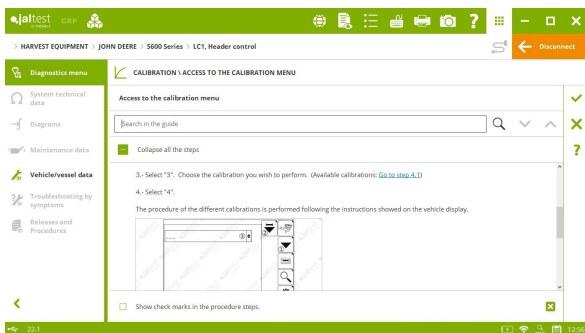
JOHN DEERE

⊕ **PTP** transmission in **S500 Series, S600 Series** and **S700 Series** models.

⊕ **LC1** and **LC2** harvest systems.

NEW HOLLAND

New wiring diagram configurations and troubleshooting guides in error codes available in the **EDC 17 CV41** engine control system in CR Series model with **Final Tier 4/Stage IV** engine.



SELF-PROPELLED AND TRAILING IMPLEMENT

Dynamic System Display in **John Deere** engine control systems in brands such as **AIR-O-FAN, HAGIE, MAZZOTTI** or **SITREX-AGM**.

New wiring diagram configurations, technical data and troubleshooting guides in error codes available in the **EDC 17 C49** engine control system in the following brands: **FARESin, GRIMM, KUHN, MATRIX, MILLER, STORTI** and **TATOMA**.

jaltest GRP

S... > MAZZOTTI > MAF 2580, engine: Tier 5 / Stage V > ECU HPCR (Level 34 - Tier 4F/5 - Stage IV/V), Electronic Diesel Control, Common Rail

Disconnect

Diagnostics menu

- System technical data
- Diagrams
- Maintenance data
- Vehicle/vessel data
- Troubleshooting by symptoms
- Releases and Procedures

MAINTENANCE \ DIESEL PARTICULATE FILTER \ PARTICULATE FILTER REGENERATION \ Exhaust gases aftertreatment system

PARTICULATE FILTER REGENERATION, STATE

- INACTIVE
- MANUAL REGENERATION
- FORCED REGENERATION
- REGENERATION INTERRUPTED

SOOT CONTENT ON THE PARTICULATE FILTER

- 2 - MEDIUM
- 3 - HIGH
- 4 - TOO HIGH
- 5 - SERVICE MODE

CO, HC, PM, DOC, DPF, NOx, SCR, AOC, N₂, H₂O

NOx NITROGEN OXIDE SENSOR BEFORE THE S... 498 ppm

NOx NITROGEN OXIDE SENSOR AFTER THE S... 983 ppm

22.1 13:04