

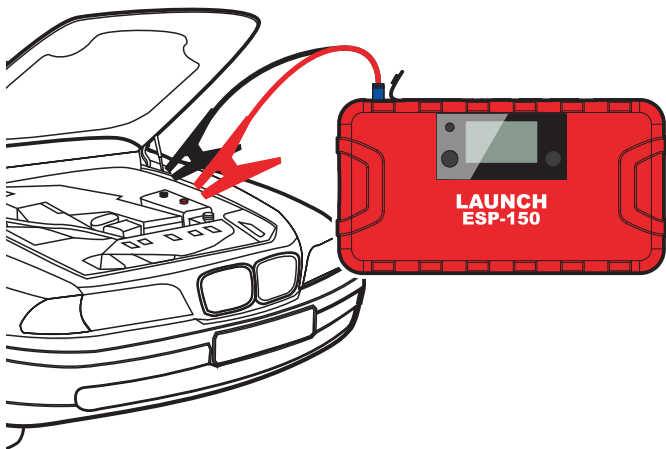
# LAUNCH

# USER'S MANUAL

---

## ESP-150

### Car Jump Starter



**LAUNCH TECH CO.,LTD.**  
[www.cnlaunch.com](http://www.cnlaunch.com)

## NOTICE!

- Carefully read the user manual before using, and keep it well for future reference.
- Carefully check the device parts list before using. For any doubt, contact Launch distributor immediately.
- Due to the product upgrade, tiny difference between the user manual and the device will not be further noticed. Take the device as standard.

Copyright reserved! Without written agreement from Launch Tech Co., Ltd (Hereinafter refer to "Launch"), any company or person is not allowed to copy and duplicate this user manual in any format (electronic, mechanical, video, record or other formats). The user manual is designed only for Launch products. Any consequence caused by using the user manual to guide other device operation is not under the responsibility of Launch.

Launch and its branches are not responsible for the fees and expense of the device damage and loss due to private accident or from third party, misuse and abuse of the device, unauthorized change and repair, or any operation and maintenance not following Launch standard.

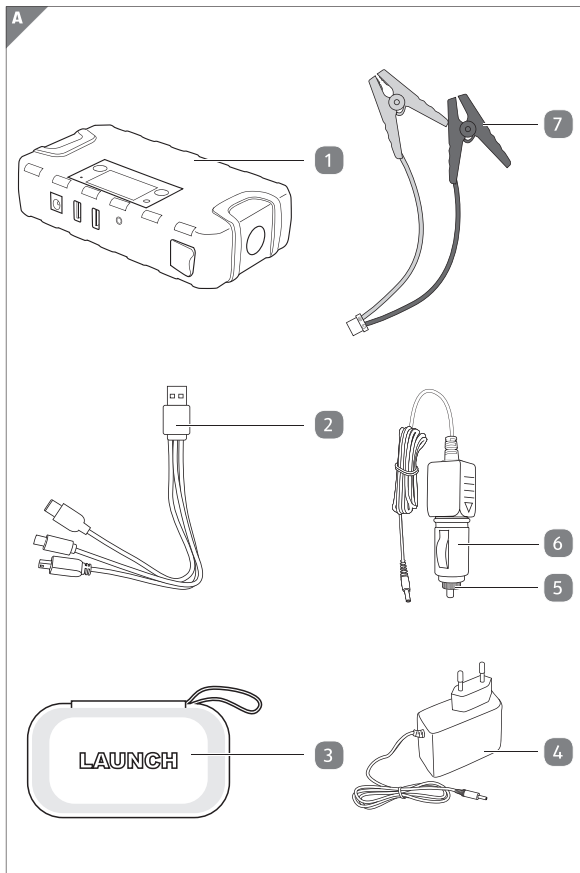
Launch is not responsible for device damage or problem due to the usage of any optional parts or consumables instead of Launch original products or Launch recognized products.

Declaration: Other product names mentioned in the user manual are aimed to describe the device usage. The registered trademarks still belong to the original company.  
The device is for professional technicians or maintenance and repair personnel.

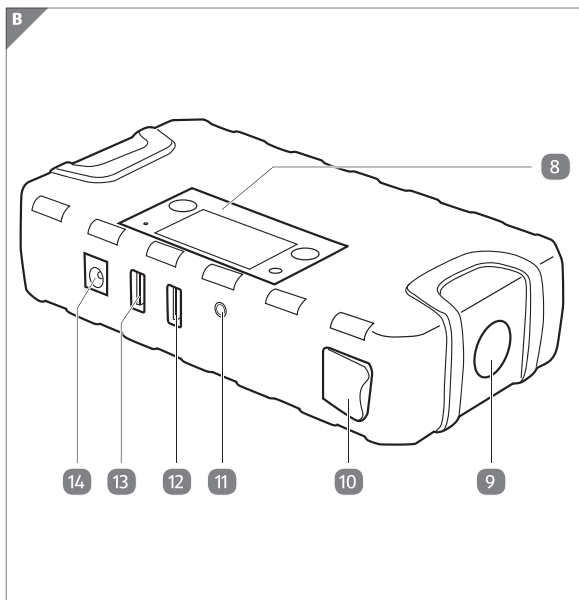
### Registered Trademark

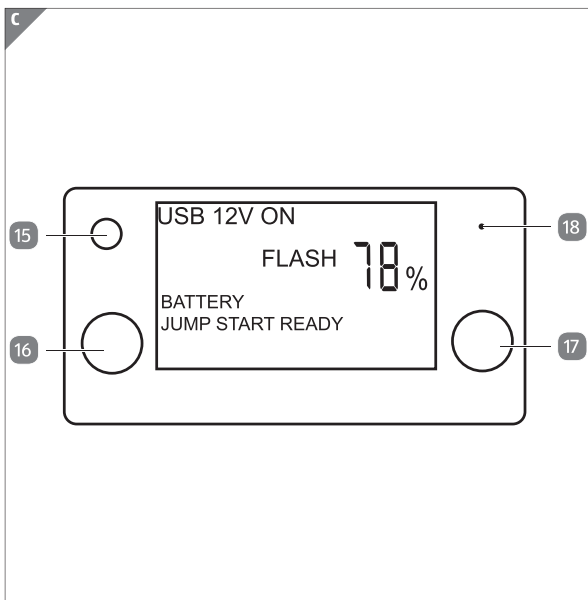
Launch has registered its trademark in China and several other countries, logo is **LAUNCH**. Other Launch trademarks, service marks, dot names, icons, company names mentioned in the user manual all belong to Launch and its subsidiaries. In those countries where Launch trademark, service mark, dot name, icon, company name not registered yet, Launch disclaim the right for its unregistered trademark, service mark, dot name, icon, and company name. Trademarks of the other products and company names mentioned in the user manual still belong to original registered company. Without written agreement from the owner, no person is allowed to use the trademark, service mark, dot name, icon and company name of Launch or of other mentioned companies. You can visit <http://www.cnlaunch.com> or write to Customer Service Center of LAUNCH TECH CO., LTD at Launch Industrial Park, North of Wuhe Avenue, Banxuegang, Longgang District, Shenzhen, P.R.China, to get contact with Launch for the written agreement on the usage of the User Manual.

## Package contents



## Package contents





## Components

- 1 Power Bank
- 2 USB connection cable
- 3 Storage folder
- 4 Charger
- 5 Cover
- 6 Car charging adapter
- 7 Jump lead (with two pole terminals)
- 8 LCD display
- 9 LED light
- 10 Jump lead connection
- 11 Charging socket 15 V/0.8 A
- 12 USB output 1: 5 V
- 13 USB output 2: 5 V
- 14 DC output 12 V, max. 10 A
- 15 Boost button
- 16 LED light button
- 17 On/Off button
- 18 Charging indicator (red LED)

## General information

### Reading and storing the user manual



This user manual accompanies this powerbank with jump starter (referred to below only as the "power bank"). It contains important information about start-up and handling.

Before using the power bank, please read through the user manual carefully. This particularly applies for the safety notes. Failure to do so may result in serious personal injury or damage to the power bank.

Store the user manual for future use. If you pass the power bank on to third parties, please be absolutely sure to include this user manual.

### Proper use

The power bank is designed exclusively for charging smartphones, cameras, tablets etc. The power bank can also be used as a torch. However, the power bank should not be used for lighting interior rooms. Using the included jump lead, the power bank is also suitable for supporting weak car starter batteries.

The power bank is suitable for supporting the starter battery in vehicles with petrol engines up to 3.5 litres and diesel engines up to 2.5 litres. The rated voltage of the vehicle battery must be 12 V.

The power bank is only intended for private use and is not intended for commercial purposes. The power bank is not a children's toy. Only use the power bank as described in this user manual. Any other use is deemed improper and may result in damage to property or even personal injury. The manufacturer or vendor accepts no liability for damage caused by improper or incorrect use.

### Explanation of symbols

The following symbols are used in this user manual, on the power bank or on the packaging.



This symbol provides you with useful information about using the device.



The charger complies with protection class II.



Only for use in dry interiors.



The product is operated using direct current.

## Safety

### Explanation of notes

The following symbols and signal words are used in this user manual.



This signal symbol/word designates a hazard with moderate risk, which may result in death or severe injury if not avoided.



This signal symbol/word designates a hazard with low risk that, if not avoided, may result in minor or moderate injury.



This signal word warns against potential damages to property.

### General safety notes

#### Work area safety

- Keep your work area clean and well lit. Cluttered or dark areas invite accidents.
- Do not operate the power bank in explosive atmospheres, such as in the presence of flammable liquids, gases or dust.
- Keep children and other persons away from the power bank during use. If you are distracted, you could lose control of the power bank.
- In the work area, the user is responsible to third parties for damage caused by the use of the power bank.

#### Electrical safety

- The connector plug of the power bank charger must fit into the socket. Never modify the plug in any way. Unmodified plugs and matching outlets will reduce risk of electric shock.
- The supplied power adapter and the power bank must be protected from dripping and splashing water to prevent damage. If water penetrates a power tool, there is an increased risk of electric shock.
- Do not use the cable for improper purposes such as for carrying the power bank, for hanging it up or for pulling or unplugging it from the socket. Keep the cable away from heat, oil, sharp edges or moving parts.



## Personal safety

- a) Stay alert, watch what you are doing and use common sense when operating the power bank. Do not use the power bank if you are tired or under the influence of drugs, alcohol or medication. A moment of negligence while operating the power bank may result in serious personal injury.
- b) Prevent unintentional starting.
- c) Avoid an abnormal posture.

## Using and handling the power bank

- a) Do not use the power bank if it shows any signs of damage. In this case, the power bank must be checked by a qualified person.
- b) Keep the power bank out of the reach of children. Do not allow persons unfamiliar with the power bank or these instructions to operate the power bank.
- c) Look after the power bank with care. Check for broken or damaged parts that affect the function of the power bank. If any parts of the power bank are damaged, have them repaired before use.
- d) Use the power bank, accessories etc. in accordance with these instructions. Take into account the working conditions and the work to be performed. Use of the power bank for operations different from those intended could result in a hazardous situation.
- e) When working in the engine compartment of a vehicle, attention must be paid to rotating and moving parts.
- f) A defective or damaged power bank must not be used.
- g) The power bank may not be opened by users. If it is damaged, please contact After Sales Support.
- h) Warning! Do not throw the power bank into an open fire. Danger of explosion!
- i) Warning! No objects should be inserted into connection openings. Risk of short circuit!

## Safety instructions for the integrated rechargeable battery

- a) Only use the enclosed charger to charge the power bank. Otherwise, there is a risk of fire.
- b) If used improperly, liquid may leak out of the rechargeable battery. Avoid coming into contact with it. Rinse with water in the event of accidental contact. If liquid comes into contact with your eyes, also seek medical attention. Fluid leaked from the rechargeable battery may cause skin irritations or chemical burns.

## Service

a) Only have your power bank repaired by a qualified professional and only with original spare parts. This will ensure that the safety of the power bank is maintained.

### Battery notes

We take the utmost care in building every rechargeable battery pack to ensure that we can provide you with a rechargeable battery that offers you the greatest possible energy density, longevity and safety. The rechargeable battery cells have multilevel safety fixtures. Each individual cell is initially formatted and its electrical characteristics are recorded. This data is then used to group the best possible battery packs.

Despite all safety precautions, you must always exercise caution when handling rechargeable batteries. The following points must be observed for safe operation.

Safe operation is only guaranteed with undamaged cells! Mishandling will result in cell damage.

Attention! Analyses confirm that gross misuse and improper care are the major causes of damage in high performance batteries.

1. For optimal battery performance, avoid deep discharge cycles!

i.e. do not completely discharge the battery. Pay attention to the power bank level indicator. Recharge your battery in a timely manner.

2. Do not deeply discharge batteries!

Deep discharges damage the battery cells. The most common cause of the deep discharge of battery packs is long storage or disuse of partially discharged batteries. Stop operation as soon as the performance drops noticeably or the protection electronics start up. Only store the battery after full charge.

3. Protect the batteries and power bank from overload! Overloading quickly leads to overheating and cell damage inside the battery case, without the overheating being outwardly noticeable. In the event of overloading and overheating, the integrated safety shutdown switches off the power bank for safety reasons. Attention! Do not operate the on/off switch if the protective shutdown has switched off the power bank. This can damage the battery.

4. Avoid damage and shocks! Immediately replace the power bank if it falls over one meter or has been subjected to heavy impact, even if the power bank's casing appears undamaged. The battery cells inside may be seriously damaged. Please also note the disposal instructions.

### Notes on the charger and charging process

1. Observe the specified data on the nameplate of the charger. Only connect the charger to the mains voltage indicated on the rating plate.

2. Protect the charger and cable from damage and sharp edges.

---

3. Keep the charger, power bank and accessories away from children.
4. Do not use damaged chargers.
5. Do not use the supplied charger to charge other batteries.
6. The power bank heats up with heavy usage. Let the power bank cool down to room temperature before you start charging it.
7. Do not overcharge batteries! Respect the maximum charge time. These charging times only apply to discharged batteries. Inserting a charged or partially charged power bank several times may overcharge it and damage the cells. Therefore, remove the charger if the display shows 100%. Remove the charger from the mains socket.
8. Never use or charge batteries that you suspect have not been charged for more than 12 months. It is highly likely that the battery is already dangerously damaged (deep discharge).  
For this reason, the power bank must be charged every two to three months.
9. The power bank may warm up slightly during normal operation. This is normal. For this reason, the power bank must not be covered during charging or operation.
10. Warning! Do not use rechargeable batteries that have buckled or deformed during charging or that show unusual symptoms (outgassing, hissing, crackling, unusual sounds or smoking).  
If any of these symptoms occur, immediately disconnect all attached cables from the power bank.
11. Never charge batteries unattended!
12. The power outlet must be nearby and always accessible so that the power adapter can always be removed quickly in an emergency.
13. Warning! The charger must not be touched with wet hands.
14. The power adapter must always be handled by the housing, it must never be pulled out of the socket by the cable.
15. The power adapter consumes power as long as it is plugged into a power outlet. Complete removal from power can only be achieved by unplugging the adapter.

## Protection against environmental influences

1. Protect the power bank and charger from dripping or splashing water. If water or moisture gets into the power bank, it can damage the electronics.
2. Do not use the power bank and charger near vapours of flammable liquids.
3. Protect batteries against overheating! Overloading, overcharging or sunlight leads to overheating and cell damage. Do not charge or work with batteries that have overheated.
4. Do not store the power bank in the car during the summer months. The temperature inside the car can get to well over 40 °C. This can lead to damage to the power bank.

## Special safety notes

- When jump-starting, do not wear clothing made of synthetic materials to prevent sparking due to electrostatic discharge.
- Warning! Avoid flames and sparks. When jump-starting, explosive oxyhydrogen is released from the car battery.
- When jump-starting, make sure you have good ventilation in the garage or in the room.
- Warning! If there is a strong smell of gas, there is a high risk of explosion. Do not switch off the power bank, do not remove the charging clamps. Immediately ventilate the room well. Have the car battery checked by After Sales Support.
- Observe the instructions of the car battery manufacturer.
- Observe the information and instructions from the vehicle manufacturer for battery charging.

Store the safety instructions in a safe place.



Risk of electric shock!

A faulty electrical installation or excessive mains voltage may result in an electric shock.

- Connect the power bank only if the mains voltage of the socket corresponds to the specification on the rating plate.
- Only connect the power bank to an easily accessible socket so that you can quickly disconnect the charger from the mains supply in case of a failure.
- Do not operate the power bank if it exhibits visible damage or if the mains cord or mains plug is defective.
- If the power bank's mains cord is damaged, it must be replaced by the manufacturer, its After Sales Support department or a similarly qualified person in order to prevent risks.
- Do not open the housing; instead, have a qualified professional carry out repairs. Contact a qualified workshop for this. Liability and warranty claims are waived in the event of repairs performed by the user, improper connection or incorrect operation.

- Only parts that comply with the original device data may be used for repairs. This charger contains electrical and mechanical parts that are essential for providing protection against sources of danger.
- The power bank must not be operated with an external timer or with a separate telecontrol system.
- Do not immerse the power bank, the mains cord or mains plug in water or other liquids.
- Never touch the mains plug with wet hands.
- Never pull the mains plug out of the socket by the mains cord, but always solely by taking hold of the plug at the end of the cord.
- Never use the mains cord as a carrying handle.
- Keep the power bank, mains plug and mains cord away from open flames and hot surfaces.
- Lay the mains cord so that it does not pose a tripping hazard.
- Do not kink the mains cord and do not lay it over sharp edges.
- Never store the power bank such that there is a risk of it falling in a tub or sink.
- Never reach to retrieve an electrical device if it has fallen in water. In such a case, immediately disconnect the mains plug.
- Make sure that children do not insert any objects into the power bank.
- Always switch the power bank off and pull the mains plug out of the socket when you are not using the power bank, when you are cleaning it, or in the event of a fault.



Danger for children and persons with impaired physical, sensory or mental capacities (e.g. partially disabled persons, older persons with reduced physical and mental capacities) or lack of experience and knowledge (e.g. older children).

- This power bank may be used by persons with impaired physical, sensory or mental capacities or those lacking experience and knowledge, if they are supervised or have been instructed in how to safely use the power bank and understand the risks associated with operating it. Children must not play with the power bank. Cleaning and user maintenance must not be performed by unsupervised children.
- Children should not use the power bank.
- Keep children away from the power bank and connection cable.
- Do not leave the power bank unattended while in use.
- Do not let children play with the packaging wrapper. Children may get caught in it when playing and suffocate.

**NOTICE!**

**Risk of damage!**

Improper handling of the power bank may damage the power bank.

- Only use the replacement parts provided by the manufacturer. Contact the manufacturer at the service address specified on the warranty card.
- Do not use the power bank in the rain. The power bank is not resistant to water or moisture.

## First use

### Checking the power bank and package contents

#### NOTICE!

#### Risk of damage!

If you are not cautious when opening the packaging with a sharp knife or other pointy objects, you may quickly damage the power bank.

- Be very careful when opening it.
  1. Take the power bank out of the packaging and check whether the power bank or the individual parts exhibit damage. If this is the case, do not use the power bank. Contact the manufacturer at the service address specified on the warranty card
  2. Make sure that all package contents are present (see Fig. A).

### Preparing for use

#### Charging with the charger



#### Risk of damage!

Improper charging of the power bank battery may damage the power bank.

- Only charge the power bank with the supplied charger.
- Do not use the power bank outputs while it is charging.



From empty, the battery will take approx. 5 hours to recharge. During the charging process, the battery in the power bank can heat up somewhat, this is normal.

1. Connect the charger **4** to the 15V/1A charging socket **11** on the power bank.
  2. Plug the charger into an appropriate and properly installed socket. The rechargeable battery will charge.
- During charging, a red LED **18** illuminates and the battery level indicator appears on the LCD display **8** (see Fig. B).

- "CHARGING BATTERY" also appears on the display. The rechargeable battery has been fully charged when the display shows 100%.



If the integrated battery has less than 20% charge, "BATTERY LOW RE-CHARGE" appears on the display. Charge the battery when this message appears.

## Charging with the car charging adapter



Risk of injury!

Improper charging of the power bank battery may result in injury.

- Never connect the car charging adapter to 24 V connections.
- Place the power bank in your car in such a way that it will never be compromised or pose a hazard.
- Pay attention to where the cable is. The cable should not cause any obstructions.



Charging should only be carried out while driving as it discharges the car battery.

1. Connect the car charging adapter **6** to the 15V/0.8A charging socket **11** on the power bank.
2. Plug the car charging adapter into a suitable 12V cigarette lighter socket.
3. The charging indicator **18** on the LCD display **8** lights up during charging. When the indicator on the display reaches 100%, the charger must be disconnected.



If charging with the car charging adapter is not possible, the fuse is probably defective (see chapter "Changing the car charging adapter fuse").

## Changing the car charging adapter fuse



- The fuse is broken if the wire in the middle, which passes from the beginning to the end of the fuse, is broken.
- Use only a fuse of the same type as listed in the chapter "Technical data".



1. To do this, unscrew the cover **5** from the car charging adapter **6** and remove the fuse.
2. Replace the defective fuse with a new one and screw the cover back on the car charging adapter.

## Use

### Indicator on display (see Fig. C)

CHARGING BATTERY	Battery is charging
BATTERY LOW RECHARGE	Battery is low, please charge
LIGHT	LED lights up continuously
FLASH	LED flashes
SOS	LED flashes SOS
WARNING CLAMPS REVERSE	The clamps are incorrectly connected to the car battery
PRESS BOOST BUTTON	Press Boost button <b>15</b>
JUMP START READY	Jump start can be performed
SHORT CIRCUIT IN JUMPING PORT	Short circuit or overvoltage during jump start

### Display battery capacity

- Press the On/Off button **17**. The LCD display **8** lights up and shows the current charge percentage of the built-in Li-Po battery.

### Using the LED light



#### Risk of injury!

The light of the LED is very bright and can harm the eyes if looked at directly.

- Never look directly at the beam of the LED light.
- Ensure not to shine the light into the eyes of people or animals when using the LED light.

1. Press the LED light button **16** once. The LED light **9** lights up continuously.
2. Press the LED light button again to make the LED light flash (can be used to warn of hazards).
3. Pressing the LED light button one more time, makes the LED light flash as an SOS Morse code signal.
4. Pressing again will turn off the LED light.

The active LED light mode is shown in the display.	
LED light lights up continuously	Display indicator: "Light"
LED light flashes (fast)	Display indicator: "Flash"
LED light flashes SOS	Display indicator: "SOS"

## Operation

### NOTICE!

#### Risk of damage!

Improper handling of the power bank may damage the power bank or the appliance that is charging.

- The maximum total current of 3 A at the two USB outputs must not be exceeded.
- Pay attention to the voltage and current values of the charged appliance (e.g. mobile phone). Take note of its user manual.



- After 30 seconds, the power bank will go into standby mode: Push any button to re-activate it.
- The length of time that power is delivered varies depending on the charge level of the power bank as well as the power consumption and intensity of use of the device that is connected.

## Charging/operating appliances with USB connection

1. Connect an existing (or supplied) USB connection cable **2** to the USB output **12/13** of the power bank and then to the appliance to be charged.
2. The USB outputs can be used in parallel. Make sure that the total output current does not exceed 3 A.
3. Press the on/off button **17**.

## Operating 12 V DC devices

1. Connect an existing connection cable (not included) to the 12 V DC power **14** outlet of the power bank and then to the appliance to be charged.
2. Push the On/Off button **17**.

## Jump start for motor vehicles

The power bank is suitable for supporting the starter battery in vehicles with petrol engines up to 3.5 litres and diesel engines up to 2.5 litres.



### Risk of injury!

Attaching the charge cord to the vehicle battery improperly can lead to short-circuiting or an explosion.

- During a jump start operation, only the jump lead may be connected. Charging of other devices, e.g. by USB connection, must first be stopped.
- The capacitance of the donor starter battery (e.g. 45Ah) must not be significantly below the discharged starter battery.
- The rated voltage of the vehicle battery must be 12 V.
- Ignition sources (e.g. open flames, burning cigars, cigarettes or electric sparks) must be kept away from starter batteries (risk of deflagration).
- Do not bend over starter batteries (risk of chemical burns). The electrolyte from the discharged starter battery is also liquid at low temperatures.
- The discharged starter battery must not be disconnected from the associated electrical system during or for jump start.
- Switch off the ignition of both vehicles before connecting the jump leads.  
The parking brakes must be applied. For manual gearboxes, shift the gear lever to neutral; for automatic transmissions, shift the selector lever to position "P".

- Lay the jump leads so that they can not be caught by rotating parts in the engine compartment.
- Vehicles are equipped with several electronic components. Observe the notes in the user manual for the car, radio etc.
- Never connect the pole terminals to the vehicle body.
- Make sure that the plug from the jump lead is firmly connected to the appliance socket. If the connection is loose during the jump start process, the connector may melt due to the high current.
- Make sure the poles of the car battery are clean and the jump leads are firmly fixed to the battery poles.
- Never connect the battery clamps with one another. Otherwise there is a risk of short-circuiting.
- Always wear suitable work clothing, protective gloves and protective glasses while working with a vehicle battery.
- Remove any metallic objects (e.g. rings, wristwatches, necklaces) before jump-starting.
- Follow the owner's manual of the vehicle and consult a qualified expert when in doubt.

**NOTICE!**

**Risk of damage!**

Improper handling of the power bank may damage the battery.

- Stop the BOOST after three attempts to protect the battery from damage.
- Disconnect the clamps and start again.



Make sure the internal battery of your jump-starter is at least 60% charged. Use only the included jump lead.

1. Open the cover of the jump lead connection **10** and connect the jump lead **7** to the power bank (see Fig. B).
2. First connect the red cable to the positive pole and then the black cable to the negative pole of the car battery.

Ensure that the clamps are secure. Then make sure that the power bank is safely stored in the engine compartment and secured against falling during the jump-start. The power bank must not be within reach of moving parts.

- When both clamps are properly connected, press the Boost button **15**.  
"JUMP START READY" appears on the LCD display **8**.



If the clamps are not properly connected, a warning tone sounds. Then this error message appears on the display: "WARNING CLAMPS REVERSED" (Warning! Clamps incorrectly connected). Swap the clamps to resolve the error message.

- Start the vehicle within 30 seconds.  
Start attempt duration is max. 5 seconds; waiting time between two start attempts must be at least 30 seconds.
- Once the engine is running, remove the jump lead from the power bank. Then remove the red clamp and the black clamp from the battery.
- Allow the motor to run. The alternator charges the inbuilt battery.



The number of possible jump-start attempts (10 max.) depends on the ambient temperature, the condition of the battery in the car and the charge level of the power bank battery.

## Cleaning and maintenance



Risk of electric shock!

Improper handling of the power bank may result in injury.

- Disconnect the power bank from the mains supply before cleaning it.
- Remove all connected cables from the power bank.

**NOTICE!**

Risk of short circuit!

Water or other liquids that have penetrated the housing may cause a short circuit.

- Never immerse the power bank in water or other liquids.
- Make sure that no water or other liquids penetrate the housing.

**NOTICE!**

Risk of damage!

Improper handling of the power bank may damage the power bank.

- Do not use any aggressive or abrasive cleaners and do not use cleaners based on solvent, acid or chlorine.
- Do not use any brushes with metal or nylon bristles, as well as sharp or metallic cleaning utensils such as knives, hard scrapers and the like.
- Clean the power bank with a dry cloth. For stubborn dirt, use a slightly damp cloth with a mild detergent.






There are no parts within the device that need to be maintained.

- If any faults occur, have the power bank checked by an authorised specialist or After Sales Support.

## Storage

- Always store and transport the power bank in the supplied storage folder.
- Ensure that the power bank is not exposed to major vibrations or shocks.
- Charge the power bank every two to three months to maintain battery performance.
- Store the power bank in a dry, dirt-free area not exposed to sunlight at temperatures between -20°C and +60°C.

## Technical data

Model:	ESP-150
Capacity of integrated battery (Li-Po):	15000 mAh, 3.7 V: 55.5 Wh
Charging time with enclosed charger approx.:	5 h
Charging current:	0.8 A
Charging time with enclosed car charging adapter approx.:	5 h
Charging current:	1 A
DC output:	12 V max. 10 A
Minimum output current:	70 mA
Polarity:	
Jump start current:	250 A (5 sec.)/500 A (max.)
Ambient temperature at jump start:	-15 °C to +40 °C
Storage temperature:	-20 °C to +60 °C
Protection class:	III
USB output 1:	5 V 
USB output 2:	5 V 
Minimum output current:	70 mA
Dimensions W x D x H:	approx. 167 x 88 x 40 cm
Weight:	590 g
Charger	
Rated input voltage:	100–240 V~ 50/60 Hz
Input current:	0.6A (max.)
Rated output voltage:	15 V 
Rated output current:	max. 1000 mA
Protection class:	II
Car charging adapter	
Rated input voltage:	13.5 – 15 V
Input current:	< 1.2 A
Rated output voltage:	13.5 – 15 V 
Rated output current:	< 1.2 A
Fuse:	T5AL/250 V

## Warranty Clause

The warranty clause is only applicable to users and distributors who purchased Launch products via the regular process.

Within 1 year since the delivery, Launch guarantee the products damaged due to the material or craft defects. Any damage to the device or part due to abuse, unauthorized change, usage other than designed to, operation not following the user manual, etc. is out of the warranty compensation for the auto instrument damage due to the device defect is limited to repair or replacement, Launch is not responsible for any indirect or accidental loss. Launch will clarify the device damage according to the specified test method. Any distributor, employee and business representative of Launch are not entitled to do any confirmation, presentation or promise related to Launch products.

## Statement of Disclaimer

The above warranty clause can substitute for any other form of warranty clauses.

## Purchase Order

Replaceable parts and optional parts are available from Launch authorized suppliers. Purchase order should include:

Order quantity

Part number

Part name

## Customer Service Center

Any question during the operation, please call +86 755 84528888.

For maintenance and repair, please send back to Launch with Warranty Card, Product Qualified Card, Purchase Invoice and problem description. Launch will maintain and repair the device for free when it is within the warranty. Otherwise, Launch will charge the maintenance and repair and the shipping.

Launch address:

Shenzhen Launch Tech Co., Ltd,

Launch Industrial Park, North of Wuhe Avenue. Banxuegang, Longgang District, Shenzhen, P.R.China

Receiver: Customer Service Center Postcode: 518129

Launch website: <http://www.cnlaunch.com>