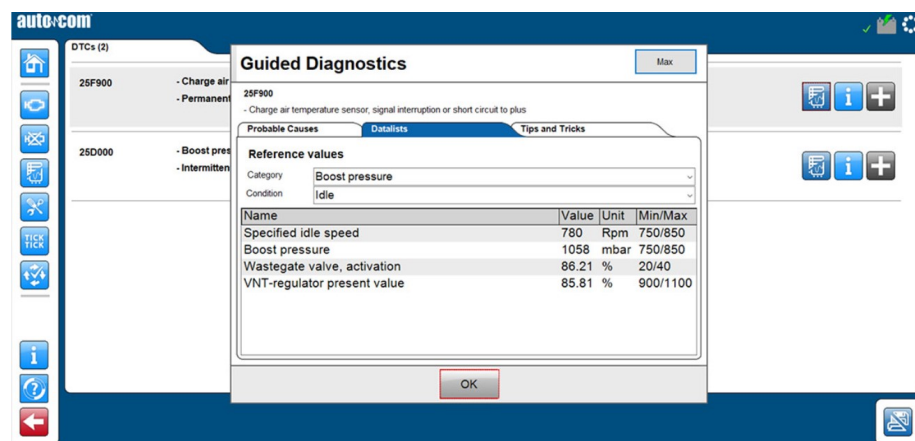


Guided Diagnostics

Guided Diagnostics is a great complement to the Info system (by HaynesPro) and is built up with three main sections:

- Parameter data with reference values
- Probable causes with rate fix
- Tips & Tricks based on live case experience

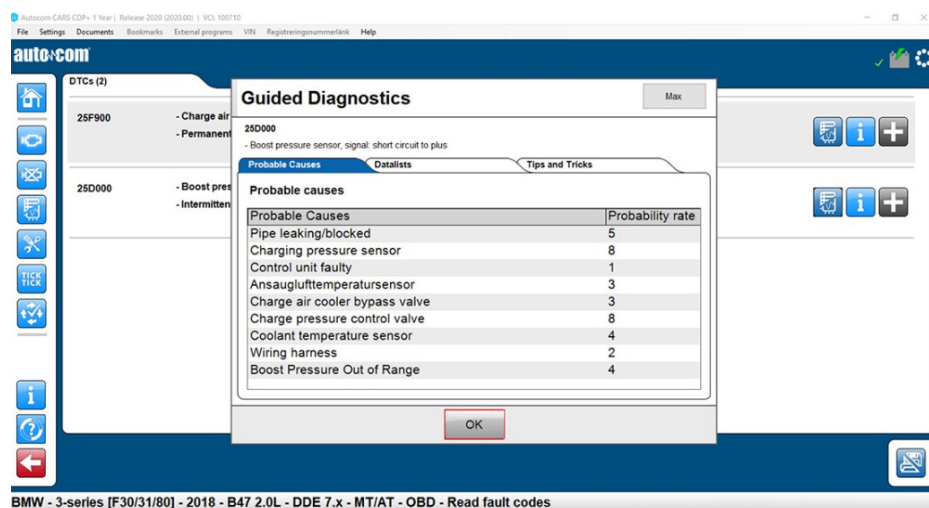
Everything made available for you at any time. It's like always having the Vehicle Guru in your own toolbox.



PARAMETER DATA

The Parameter data includes reference values for relevant parameters related to the specific DTC (fault code). The reference values are sorted in different states of the system, for example there can be parameters for engine idling and for raised RPM.

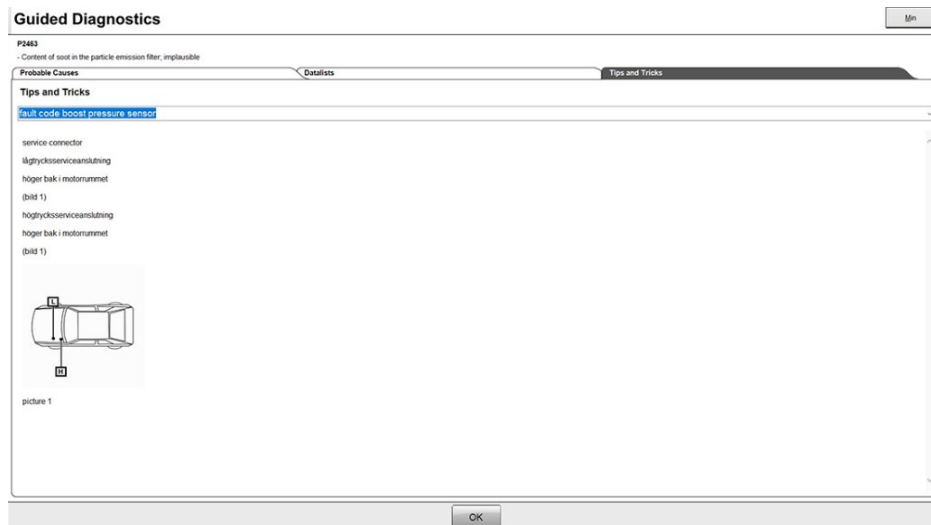
This feature is available for models within brands; Alfa Romeo, Audi, BMW, Citroën, Fiat, Ford, Mercedes, Nissan, Opel, Peugeot, Seat, Škoda and Volkswagen.



PROBABLE CAUSES AND RATE FIX

Probable causes and Rate fix, gives you the most likely root causes to a defined DTC (Fault code), also in the priority order to start investigating the most common fault.

1750 Protocols are covered with probable causes and rate fix within brands: Alfa Romeo, Audi, BMW, Citroën, Fiat, Ford, Mercedes, Nissan, Opel, Peugeot, Porsche, Seat, Škoda and Volkswagen.



TIPS & TRIX

Tips & Tricks are general real-life know-hows for the selected system covering most parts of the vehicle, from brakes, airbags, central electronics, climate control, instrument cluster and of course a main focus on engine management.

Tips & Tricks are available for 153 most common models in following 21 Brands; Alfa Romeo, Audi, BMW, Citroën, Fiat, Ford, Honda, Hyundai, Kia, Mercedes, Mitsubishi, Nissan, Opel, Peugeot, Renault, Seat, Škoda, Smart, Subaru, Suzuki, Toyota, Volkswagen and Volvo.

PRICING

Please contact your near local distributor for information.